

YOUR PARKLAND

2025 FALL

Keeping you connected with your County

BEST SPOTS FOR FAMILY FALL PHOTOS

Page 22

WABAMUN DOUBLE FEATURE EVENT

Beach & Big Screen Fun!

Page 6

JOIN OUR FIRE SERVICES TEAM!

Page 9

2025 MUNICIPAL ELECTION

Page 15

Cover photo: Baby turkeys (poults) in Parkland County



CONTENTS

Meet Kyle, our
Wildfire Mitigation Specialist!

5

Parkland County's
Fire Chief Honoured

8

Family and Community
Support Services

10

2025 Municipal Election

15

The Best Spots for Family
Photos in Fall

22

UPCOMING OFFICE CLOSURES

National Day for Truth and Reconciliation – September 30
Thanksgiving – October 13
Remembrance Day – November 11

PROCLAMATIONS

To view monthly proclamations, please visit
www.parklandcounty.com/Proclamations



HONEYBEE HIVE WORKSHOP



HIVE FRAME IN ACTION AT THE HONEYBEE HIVE WORKSHOP



PUBLIC COMMITTEE APPRECIATION DINNER



LADYBUG RELEASE EVENT



TRI-REGION MAYORS' GOLF CLASSIC



MESSAGE FROM THE CHIEF ADMINISTRATIVE OFFICER (CAO)

As the seasons begin to change and we head into fall, it's a natural time to reflect on the work we've accomplished together and the opportunities that lie ahead. In Parkland County, we remain focused on delivering high-quality services, strengthening regional partnerships, and planning for the future — all while staying rooted in the values that make this community such a special place to call home.

Over the past several months, we've made important progress on key initiatives, from advancing infrastructure projects in Acheson and Wabamun to enhancing how we engage with residents through surveys, open houses and day-to-day service delivery. I want to thank you — our residents and

businesses — for your ongoing feedback and participation. Your input helps guide our decisions and ensures that Parkland County continues to grow in a way that reflects the needs of those who live and work here.

With the fall season also comes the 2025 Municipal Election! This is your opportunity to get involved in local government — whether by running for office, supporting a candidate or casting your vote. We encourage all residents to stay informed and take part in the democratic process that helps shape the future of our County. Learn more on page 15.

From local harvests to community activities, fall is a vibrant time in the County. We have

some exciting upcoming events for you to enjoy, such as our Wabamun Double Feature (see pages 6–7) — which includes our annual outdoor movie — and the Community Round Dance, followed by WinterFest later this year. We hope to see you at one (or all) of these community-based events. Find details on page 16.

I encourage you to get connected, support local and take time to enjoy the beauty of Parkland County in autumn. On behalf of our entire administration team, I wish you a safe and colourful fall season!

Laura Swain, Chief Administrative Officer

We acknowledge that we are located on the lands of Treaty 6 which is the traditional home of the Cree, Dene, Saulteaux, Blackfoot, Nakota Sioux nations, members of the Métis nations of Alberta, Inuit and all First Nations sharing this land for generations. We recognize the long history and contributions of Indigenous peoples who've cared for this land from time immemorial to the present. We acknowledge that we are all treaty people bound to one another by the spirit and intent of treaty as long as the sun shines, the grass grows and the river flows.

CONNECTING with our COMMUNITY



At Parkland County, staying connected with our residents is a top priority.

We're excited to share the many ways you can hear from us, stay informed, and be part of the conversation. Whether you prefer email updates, social media, or other channels, there's a way that works for you.

Take a look at the options below, find what fits you best, and don't forget to subscribe and follow us to keep in touch!



Direct Mail — Postcards & Letters

We create postcards and letters to support online messaging or to reach specific residents and businesses directly, by mail or handout.



Digital Signage

- Parkland County Centre front reception
- Entwistle Recreation Centre
- Wabamun



Roadside Signage

Family and Community Support Services programming may include additional signage as needed for special projects or initiatives.



Advertising — Print, radio, social media

For high priority communications the County deploys advertising in print, on local radio, and via targeted social media content.

YourParkland MAGAZINE



Mailed directly to all residents each Spring, Summer, Fall and Winter, our quarterly magazine is filled with important updates, community features, news and events.



E-NEWSLETTER

Distributed directly to inboxes on the last Friday of each month, Your Parkland Monthly is jam-packed with important County and community news and events.



Subscribe



WEBSITE

parklandcounty.com

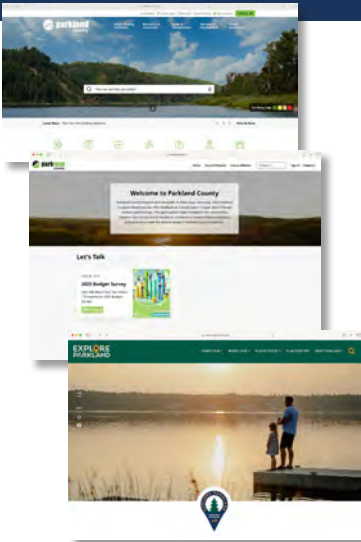
The main Parkland County website — your go-to destination for information about all County services, news, events and more.

yourparkland.ca

Our forum for public engagement, major infrastructure project updates and more. Visit today and share your thoughts on the issues that matter to you!

exploreparkland.com

Our tourism hub featuring a feast of unique attractions, businesses and activities to explore across Parkland.



IN PERSON, PHONE AND EMAIL

WE'RE HERE TO HELP! YOU CAN REACH OUR FRIENDLY STAFF IN THE FOLLOWING WAYS:

Parkland County Centre

- Visit us in person, Monday to Friday, 8:30 am – 4:30 pm
- Phone: 780-968-8888
- Email: hello@parklandcounty.com
- After hours urgent concerns (24/7) 780-968-8400

Animal Shelter

- Open Monday to Friday, 1:00 – 4:00 pm

Agricultural Services Building

- Please call our customer service department to book an appointment.

For all general inquiries or department contacts, please connect with our customer service team. We look forward to assisting you!

Entwistle Community Recreation Centre

- Open Monday to Friday, 8:30 am – 4:30 pm

SOCIAL MEDIA



facebook.com/ParklandCountyAB



instagram.com/ParklandCounty/



youtube.com/@ParklandCountyAB



linkedin.com/company/parkland-county/

MEET KYLE, OUR WILDFIRE MITIGATION SPECIALIST!



Kyle first joined Parkland County's Fire Services team 13 years ago and was recently promoted to the role of Wildfire Mitigation Specialist. One of Kyle's primary duties is to educate residents on the FireSmart program.

"FireSmart is an effective tool in reducing the probability of homes and structures igniting due to wind-driven embers. It gives our crews a chance to catch up and extinguish the fire before it spreads further. I really enjoy going out and meeting people throughout the county and helping them look at their property through a new lens.

I've been able to work on multiple large scale wildland fire events here in Parkland County as well as several provincial deployments, so I've seen the benefits of FireSmart and how wildfires react in and around communities. Being able to bring that experience and share it with residents is really motivating.

When I meet with residents and they learn that small changes on their property have a big impact in terms of protecting against the possible spread of wildfire, you can see the peace of mind it gives; knowing that your property and neighbourhood are more prepared in the event of a fire. That's a part of my job that I really enjoy."

"FireSmart is an effective tool in reducing the probability of homes and structures igniting due to wind-driven embers."

— Kyle Sherman,
Wildfire Mitigation Specialist

What is a FireSmart Advanced Home Assessment?

A qualified team member will come to your home, conduct a free 30-minute assessment and prepare a report with tips and actions you can take to make your property more likely to survive a wildfire.

Our FireSmart experts will:

1. Tour the outside of your house and yard for things that increase your risk during a wildfire.
2. Provide a customized report based on what they see with actions on how to reduce the risk of damage by wildfire.
3. Share helpful tips to make your home less susceptible to approaching wildfires.

To book your free assessment, visit parklandcounty.com/FireSmart

Looking for some quick FireSmart tips while you're in the yard this fall?

CHECK YOUR DECK!

Getting your yard ready for winter? Materials like firewood and patio furniture stored under a deck are fuel for an approaching wildfire. Store these items at least 10 m away from the house and remove any dry leaves or debris to avoid a fire hazard that's attached to your home.

CLEAR EAVES OF LEAVES

The foliage is falling but debris left in eaves and on rooftops make it easier for wildfires to spread. Embers can travel up to 2 km on average and ignite materials when they land, so get your gutters in shipshape to keep everyone safe.

TIME TO TRIM THE TREES

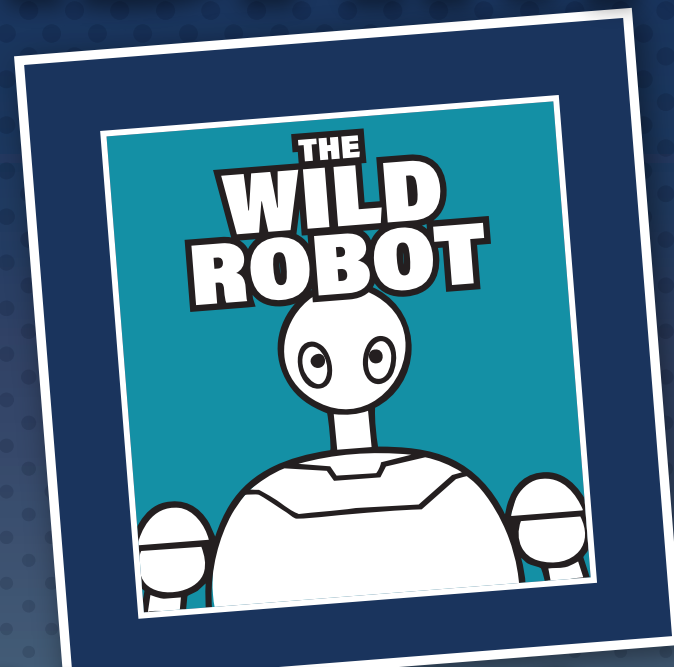
We may be in Autumn but now is a great time to consider trimming the trees in your yard. Removing all branches within 2 m of the ground can help slow the spread of wildfires. Trimming all trees within 30 m of your home is recommended.

FireSmart, Intelli-feu and other associated Marks are trademarks of the Canadian Interagency Forest Fire Centre (CIFFC).

For more tips on how to protect your home, visit parklandcounty.com/FireSmart

A PARKLAND COUNTY DOUBLE FEATURE

WABAMUN



OUTDOOR MOVIE



FRIDAY, SEPTEMBER 19

GATES OPEN AT 6 PM • MOVIE STARTS AT 7 PM | COAL DIAMOND SPORTS PARK, WABAMUN

CONCESSION STAND AVAILABLE
FOR SNACKS

PETS ARE NOT PERMITTED

YOUTH 12 & UNDER REQUIRE
ADULT SUPERVISION

LIMITED PARKING ON SITE

For more details, visit YourParkland.ca/movie

NEW TOYS AND NON-PERISHABLE FOOD DONATIONS WILL BE ACCEPTED ON SITE



BEACH & BIG SCREEN



WATERFRONT PARK GRAND OPENING!



SATURDAY, SEPTEMBER 20

10 AM – 4 PM | 5119 50 ST, WABAMUN, AB



THIS FREE FAMILY EVENT HAS SOMETHING FOR EVERYONE!

RIBBON CUTTING
CULTURAL PRESENTATIONS
CHILDREN'S ENTERTAINMENT

LIVE MUSIC
FAMILY FUN ZONE
BBQ LUNCH

VENDOR MARKET
...AND MORE!

The public boat launch will be closed for the day.

For event details, visit www.YourParkland.ca/Waterfront



PARKLAND COUNTY'S BRIAN CORNFORTH HONoured

KING CHARLES III CORONATION MEDAL

In well-deserved recognition of his exceptional career and steadfast commitment to public safety, Parkland County Fire Services long-serving Fire Chief, Brian Cornforth, has been awarded the prestigious King Charles III Coronation Medal. This honour not only acknowledges Cornforth's 40 years dedicated to firefighting but also celebrates a legacy of leadership that has shaped firefighting across Alberta and Parkland County.

Cornforth's journey at Parkland County Fire Services has been marked by a combination of proactive leadership, mentorship, and unwavering service. Since starting his career at Parkland County Fire Services in 2016, Cornforth has consistently gone above and beyond the call of duty.

"Brian has demonstrated leadership that transcends boundaries," said Parkland County Deputy Fire Chief Sean Cunningham.

"He has contributed meaningfully at the local level, where communities depend on us most; at the provincial level, where policies shape our

practice; nationally, where standards elevate our profession; and internationally, where knowledge sharing saves lives across borders."

The King Charles III Coronation Medal, a symbol of royal recognition, honours individuals who have made outstanding contributions to their country and profession.

"What truly makes this recognition meaningful is not just Brian's dedication to the service, but the exceptional qualities he demonstrates in serving," said Parkland County Mayor Allan Gamble.

"Known as a trusted mentor, Brian has guided countless firefighters, preparing the next generation of leaders with patience and wisdom. He is a reliable presence in every sense, exemplifying calm under pressure and strength in the face of adversity."

Cornforth's influence goes well beyond his work in Parkland County. He has helped raise the standards of practice,

improved operational effectiveness, and championed a culture of safety and innovation.

"True leadership in the fire service isn't measured only by rank or title," added Cunningham, "but by the lives touched, the standards raised, and the legacy built."

"On behalf of Parkland County, I wish to congratulate Chief Cornforth," said Mayor Gamble. "Your service sets the standard and continues to make all of us at Parkland County proud. Your recognition is well deserved."

Lac Ste. Anne County Fire Chief Randy Schroeder awarding Brian Cornforth with medal.



PHOTO 1: (L – R) Randy Schroeder, Lac Ste. Anne County fire chief; Sean Cunningham, Parkland County Deputy Fire Chief; Bill Purdy, Parkland County Auxiliary Assistant Chief; Brian Cornforth, Parkland County Fire Chief.

PHOTO 2: Council, Randy Schroeder, Bill Purdy, and Sean Cunningham present long-serving Fire Chief, Brian Cornforth, with King Charles III Coronation Medal on Tuesday, July 8, 2025.



MAKE A DIFFERENCE IN YOUR COMMUNITY

Join our Fire Services team!

Are you looking for a meaningful way to serve your community and gain valuable skills? Parkland County Fire Services is recruiting dedicated individuals to become paid-on-call firefighters!

Our team responds to emergencies, participates in regular training, and supports local safety initiatives. It's a challenging and rewarding role where you'll be part of a professional and supportive crew committed to protecting the people and property of Parkland County.

We operate out of four fire stations — Acheson, Wabamun, Tomahawk, and Parkland Village. All

required training and equipment is provided at no cost.

If you're physically fit, live near one of our stations, and are 18 years or older (or 16+ for our Junior Firefighter Program *where capacity allows), this could be the opportunity you've been waiting for.

YOUR JOURNEY STARTS HERE!

WHAT YOU'LL NEED

- Must be at least 18 years old (Candidates between 16 and 18 years old may be considered for our junior program where capacity allows.)
- Must live within eight minutes of travel from either of the following Parkland County Fire Stations:
 - ▶ **Acheson Fire Station**
11350 – 274 St, Acheson
 - ▶ **Parkland Village Fire Station**
18-53222 Rge Rd 272, Parkland Village
- Or within 15 minutes of travel from either of the following Parkland County Fire Stations:
 - ▶ **Tomahawk Fire Station**
4902 – 50 Ave, Tomahawk
 - ▶ **West Central Fire Station**
4820 – 52 Ave, Wabamun
- Valid Class 5 Driver's Licence
- Current satisfactory driving record (fewer than 6 demerits) included with your application
- Criminal Record Check, including Vulnerable Sector Check prior to start
- Completion of a Medical Clearance Form prior to start
- Ability to meet minimum attendance requirements for weekly training sessions and emergency calls
- Ability to commit to the recruit training program typically consisting of one or two weeknight evenings and up to two weekends per month
- Commitment to a team environment and strong communication skills

WHY SERVE AS A PAID-ON-CALL FIREFIGHTER WITH PARKLAND COUNTY FIRE SERVICES?

- ✓ **Make an impact** in your community
- ✓ **Free**, industry-recognized training
- ✓ **Professional**, safe, and supportive team
- ✓ **Challenging** and rewarding experience
- ✓ **Friendships** and pride in your contributions

Applications are open until October 3, 2025.
Visit www.parklandcounty.com/Recruitment for more information.

FAMILY AND COMMUNITY SUPPORT SERVICES



UPDATES TO THE SNOW REMOVAL SUBSIDY PROGRAM

With growing interest in our snow removal subsidy program, we want to ensure we can support as many households as possible throughout the winter season.

To do this, we'll be reducing the amount of each individual subsidy. This adjustment will help us extend the program's reach and ensure more neighbours receive support.

Thank you for your understanding and for being part of a caring, connected community. You can learn about the program at www.parklandcounty.com/SnowRemovalProgram

PARENT AND TOT GROUPS

ENTWISTLE COMMUNITY RECREATION CENTRE

Day: Fridays
Time: 10 – 11:30 am
Cost: Free!

The Alberta Parenting for the Future Association (APFA) and Tot Drop-In Program is a fun, interactive and supportive activity designed for parents or caregivers and their young children. This program offers a safe and welcoming space where families can engage in play, learn, and connect with others in the community. APFA will join every Friday of every month to provide additional support and activities for families. Children must be always supervised.

INDOOR PLAYGROUND

ENTWISTLE COMMUNITY RECREATION CENTRE

(Multipurpose Room 1)
Cost: \$2 per session
(Children 6 months and older)
Days: Monday, Tuesday, Thursday, Friday
Time: 9:30 am – 3 pm
Ages: 0 – 5 years old
(exceptions will be permitted)



LEVEL UP YOUR NON-PROFIT!

NON-PROFIT LINKING & LEARNING FALL SESSIONS

GATHER FOR IMPACT Networking with Purpose

Day: September 25
Build mutually beneficial relationships to strengthen our community

BANKING ESSENTIALS FOR NON-PROFITS

Strengthen Your Financial Confidence
Day: October 16

ARTIFICIAL INTELLIGENCE FOR NON-PROFITS

Day: November 18
No tech background needed, just curiosity

All sessions are free and run from 6 pm to 9 pm. Learn more and register at sprucegrove.org/LinkingAndLearning

BRIDGING CONNECTIONS

Connect with a Community Social Worker who will offer caring, confidential support to help you navigate life's challenges, access resources, and explore solutions.

In-person service is offered Wednesdays from 9:00 am to 12:00 pm at the Wabamun Community Centre, except the second Wednesday of each month, when it moves to the Entwistle Community Recreation Centre.

WABAMUN COMMUNITY CENTRE

- October 1, 15, 22, 29
- November 5, 19, 26
- December 3, 17

ENTWISTLE COMMUNITY RECREATION CENTRE

- October 8
- November 12
- December 10

To book an appointment, call 780-962-7618 or drop in.



POVERTY AWARENESS EVENT

Date: October 28
Time: 5:30 pm – 8 pm
Location: Heritage Pavilion, 5100 41 Ave, Stony Plain

Join us for a special community event for Poverty Awareness Month. Explore different paths of poverty through stories brought to life. Enjoy some hot soup and have

dinner conversation on the state of poverty in our community.

Opening remarks by Lewis Cardinal, Woodland Cree communicator, educator, and leader whose life's work bridges cultural divides through education, public service, and storytelling.

Register at www.stonyplain.com/pathways





A LIFE SKILLS WRAP AROUND PROGRAM

Build connection. Find support. Develop life skills. Learn about restaurants and hospitality.

Cost: FREE for Adults 18+
Details: Application required
Date: Every Tuesday and Wednesday for 8 Weeks (September 9 – November 5)
Time: 3pm – 6 pm
Location: Family Connection Centre, 5600 50 Street, Stony Plain

This program also includes some sessions that take place off-site in the community, including local restaurants, kitchens, and/or event spaces.

To learn more or apply, please contact Stony Plain's Community and Social Development, connect@stonyplain.com, or visit www.stonyplain.com/connect



Red Cross Youth Programs

The Canadian Red Cross programs help educate youth on important safety situations; from learning how to Stay Safe when home alone to caring for younger children in the babysitting course. Programs and courses will be available at various Parkland County community league halls throughout the year. Upcoming courses include the following:

STAY SAFE	BABYSITTING
• October 19 — Muir Lake Community Hall	• October 4 — Carvel Hall
	• November 2 — Brightbank Hall
	• November 29 — Rosenthal Hall

Find dates and locations at www.parklandcounty.com/RedCrossPrograms

PARKLAND COUNTY LIBRARIES

Cultural Movie Night

SEPTEMBER 26

Time: Doors open: 6:30 pm
Movie starts: 7 pm
Wabamun Community Centre
Movie: Meet the Patels

Tickets are \$10 for the movie and sampling of cultural treats with proceeds going to Champions of Parkland County Libraries' Society. Contact your library for tickets.

Indoor Walking

OCTOBER 15, 22, 29

Wabamun Jubilee Hall
Time: 9 am – 11 am

OCTOBER 20, 27

Duffield Library
Time: 1 pm – 2 pm

OCTOBER 16, 23, 30

Entwistle Library
Time: 1 pm – 2 pm

OCTOBER 20, 27

Tomahawk Library
Time: 3:30 pm – 4:30 pm

Sensory Play

OCTOBER 21

Tomahawk Library
Time: 1 pm – 2 pm

NOVEMBER 6

Duffield Library
Time: 1 pm – 2 pm

NOVEMBER 25

Entwistle Library
Time: 1 pm – 2 pm

An environment where littles can explore tactile and visually stimulating stations in a social space.

Chronic Pain Management Sessions

Learn lifelong skills to manage your chronic pain through the six-week Better Choices, Better Health® — Chronic Pain workshop! At this free workshop, you will learn how to manage daily challenges with chronic pain.

- Ways to manage your pain
- Tips for healthy eating and becoming more active
- How to talk with your health care team
- Living a better quality of life

Group members meet each week for 2.5 hours in-person. Support people are also welcome to join.

UPCOMING CHRONIC PAIN WORKSHOP DATES:

September 27
October 4, 11, 18, 25
and November 2

Saturdays 12:30 pm to 3 pm at the Entwistle Public Library

For more information or to register:

Call 780-727-6666, register online at www.pclibraries.ca, or visit us at any of our locations.

When
-in-
doubt
go to the
library



CHANGE HEALTH AFTER SCHOOL PROGRAM

ADVENTURE CLUBS OFFERED IN WABAMUN AND ENTWISTLE

This free program offers a friendly, safe space where children can build connections with peers and trusted facilitators. Activities include a mix of indoor and outdoor games and crafts with opportunities like ice skating, park play, field trips to the Change Health Centre, and shared family meals. Youth enjoy fun, engaging experiences while building friendships and social skills. A healthy snack is provided at each session.

Ages: 7 – 14

WABAMUN

Days: Mondays and Wednesdays
Time: 2:45 pm – 4:45 pm

ENTWISTLE

Days: Tuesdays
Time: 3:35 pm – 5:35 pm

Visit www.changehealth.ca



Caring
FOR THE
County

*Our employees are
your neighbours!*

MEETING NEEDS, ONE CALL AT A TIME

Our Customer Service team handles a high volume of calls, emails, and walk-in inquiries but knowing that we're talking to our neighbours makes a busy job that much easier.

Serving an average of nearly 1,200 residents every month means our Customer Service team handles over 14,000 interactions per year!

KELLY

Customer Service Team and
Parkland County Resident for 13 Years



2025
ELECTION

INTERESTED IN REPRESENTING YOUR COMMUNITY IN THE 2025 MUNICIPAL ELECTION?

Nominations for the next Parkland County mayor and six divisional councillors, as well as Parkland School Division school trustees are open until 12 pm on September 22, 2025.

You can:

- Book an appointment with the Returning Officer to submit your nomination package by calling 825-963-5170 or emailing elections@parklandcounty.com

Or

- Drop in to the Parkland County Centre on Nomination Day, Monday, September 22, anytime between 10 am and 12 pm

Parkland County accepts the nominations for Parkland County Council and Parkland School Division. The Candidate Information Guide is available from the Elections Office at Parkland County Centre, or from our website at www.parklandcounty.com/election. Parkland School Division School Board Election Handbook is available on their website at www.psd.ca/board/election-2025.

Parkland County conducts the vote for school trustees under joint agreements. If you're interested in running for a school trustee position for either Evergreen Catholic Separate Regional Division or St. Thomas Aquinas Roman Catholic Schools (separate schools) please visit their respective websites for further information.

WHERE DO I VOTE?

Visit the Where to Vote app on our website to determine your voting location for Election Day.

To vote, you must prove your identity and current address.

To do this, you may:

- Provide one piece of Government-issued photo ID, including your full name, current address, and photo
- Provide two pieces of ID, both containing your full name, and with one showing your current physical address
- Have another registered elector in your voting area vouch for you
- Have an authorized signatory complete an attestation form

Learn more at www.elections.ab.ca/voters

SPECIAL BALLOT (MAIL-IN VOTING)

Voters who are unable to vote at advance voting or at their designated Election Day voting station may apply to vote by special (mail-in) ballot.

Visit our election webpage to find the request form for a special ballot.

ADVANCE VOTING

Any eligible voter can vote at any of the advance voting locations:

October 10, Muir Lake Hall, 4 pm – 8 pm

October 11, Jubilee Hall, 10 am – 4 pm

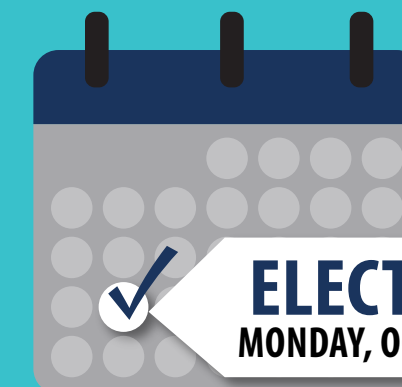
October 14, Clymont Hall, 4 pm – 8 pm

October 14, Muir Lake Hall, 4 pm – 8 pm

October 16, Jubilee Hall, 4 pm – 8 pm

October 18, Clymont Hall, 10 am – 4 pm

October 18, Muir Lake Hall, 10 am – 4 pm



OTHER QUESTIONS ABOUT THE ELECTION?

Visit the County's election webpage www.parklandcounty.com/Election for various voter and candidate details. You can also contact the Returning Officer at elections@parklandcounty.com or call 825-963-5170.

COMMUNITY EVENTS

COMMUNITY EVENTS

If you're looking to connect with your community or want to advertise an event, be sure to check out our Community Events Calendar at events.parklandcounty.com

National Day for Truth and Reconciliation September 30

Join us on September 30 for the National Day for Truth and Reconciliation at Heritage Park in Stony Plain from 10 am – 12 pm. Wear your orange shirt and join us for a morning of listening, reflection, action, and connection.

- Words of Welcome
- Elder Address
- A powerful story from Friends of Michel about the impacts of residential schools
- A screening of the *Reconciliation Begins with You* video series by the Gord Downie & Chanie Wenjack Fund, featuring young Indigenous voices
- Honour Song
- A performance by Stirling John

- Closing reflections
- Tea and bannock to gather and connect as a community

Later in the day, join us for an evening of reflection and connection at Horizon Stage in Spruce Grove. This gathering creates space to journey through the truths of Canada's past, deepen our understanding of the present, and envision a future rooted in respect, justice, and shared responsibility.

Through stories, reflections, and open conversation, we will honour the lived experiences of Indigenous Peoples and confront the ongoing impacts of colonialism.

Tea, bannock, and fruit-infused water will be served.

For more information, visit www.horizonstage.com



Mark Your Calendar for Wabamun Jubilee Hall Events

COMMUNITY ROUND DANCE

October 18

Time: 1 pm – 8 pm

Everyone is welcome, whether it's your first Round Dance or you're experienced. While ribbon skirts and shirts are encouraged, they are not mandatory. More details are available at www.parklandcounty.com/IndigenousConnections

WABAMUN WINTERFEST

Save the date for December 5

Join us for a festive evening out in Wabamun celebrating the Christmas season! More details will be coming soon — stay tuned.

HOLBORN HALL

FAMILY BINGO

September 27

Time: Doors open at 6:15 pm, games start at 7 pm

Strip of three cards: \$5, double strip: \$7, triple strip: \$10
Small concession on site

FAMILY BINGO

October 18

Time: Doors open at 6:15 pm, games start at 7 pm

Strip of three cards: \$5, double strip: \$7, triple strip: \$10
Small concession on site

HALLOWEEN TRUNK OR TREAT

October 31

Time: 5 – 7 pm

Are you missing the little trick-or-treaters coming to your house on Halloween? Do you want to hand out candy but don't know where to go? Would you love to do some trick or treating, but don't want to drive all over the place? Hand out candy from your decorated car OR bring your kids to have a little fun and tour the decorated cars to grab some Halloween goodies!

HOLBORN HANDMADE HOLIDAY MARKET

November 15

Time: 10 am – 5 pm

November 16

Time: 11 am – 4 pm

Come out and support our local vendors and makers at our annual Christmas market!

FAMILY BINGO

November 22

Time: Doors open at 6:15 pm, games start at 7 pm

Strip of three cards: \$5, double strip: \$7, triple strip: \$10
Small concession on site

CARVEL HALL

COMMUNITY CULTURAL DAYS

September 20 and 21

COMMUNITY ROOTS: CELEBRATING UKRAINIAN AND INDIGENOUS CULTURES

Ukrainian and Indigenous cultures will be featured, including dance, song, art, and food. All-ages event. Details will be posted at www.carvelhall.org

PEROGY SUPPER

October 3

Time: 4:30 pm – 7:30 pm

Dine in or take-out, plus frozen homemade perogies for sale

Tickets at door, cash only:
\$10 ages 6-12
\$25 ages 13+

Free admission for ages 5 and under

50/50 raffle

Details will be posted at www.carvelhall.org

BABA CLAUS CHRISTMAS MARKET

November 16

Time: 11 am – 4 pm

For information, contact Michelle at CarvelStationMarket@gmail.com

Details will be posted at www.carvelhall.org

HOLIDAY HANDMADE CHRISTMAS MARKET

November 29

Time: 11 am – 4 pm

For information, contact Michelle at CarvelStationMarket@gmail.com

Details will be posted at www.carvelhall.org

MUIR LAKE HALL

COMMUNITY LEAGUE DAY

September 20

Time: 12 pm – 3 pm

BINGO

October 3

Time: 7 pm

HALLOWEEN FAMILY DANCE

October 25

Time: 6 pm

WINTER MARKET

November 22

Time: 10 am – 3 pm

BINGO

November 30

Time: 1:30 pm

SAND HILLS HALL

AWESOME AUTUMN MARKET

October 18

Time: 10 am – 3 pm

Vendors email Sandhills.Events@gmail.com

HANDMADE HOLIDAY HURRAH

December 20

Time: 10 am – 3 pm

Vendors email Sandhills.Events@gmail.com

CLYMONT HALL

FALL BBQ

September 27

An excellent meal and fundraiser for the East Parkland Crime Watch Association. More details at www.clymont.com

FALL MARKET + TRADE SHOW

October 4

Time: 10 am – 4 pm

October 5

Time: 10 am – 3 pm

30+ local businesses with a range of products and services. Food trucks, raffles, and free entry. More information at www.clymont.com

FAMILY HALLOWEEN DANCE

Fundraiser for Clymont Playschool

October 24 and October 25

Watch for ticket sales at www.clymont.com

UKRAINIAN NIGHT

November 15

Watch for ticket sales at www.clymont.com

CHRISTMAS CRAFT SALE

November 29 and 30

Handmade local items. Free entry. More information at www.clymont.com

NEW YEAR'S EVE

December 21

Ring in 2026 with us. Enjoy a delicious meal, live band, balloon drop, midnight lunch, champagne toast, favours, and a lot of fun with us! Visit www.clymont.com for more information

GRAMINIA HALL

BACK TO SCHOOL BASH

September 27

Time: 11 am – 3 pm

WOODBEND HALL

FALL FUNDRAISER

October 4

Get ready for an evening full of fun, food, and music — all in support of raising money for the playground replacement project! Come out and enjoy great eats, live tunes, and a strong sense of community as we raise funds to create a better play space for our youngest community members. Please check www.woodbendhall.com/events for details.

CRIB TOURNAMENT

November 1

Show us your amazing crib skills and enjoy the company of your fellow community members. Snacks and a hot lunch are included with cash prizes for the top teams. More details will be posted online at www.woodbendhall.com/events

CHRISTMAS BREAKFAST

November 29

Save the date and bring the whole family to enjoy a hearty breakfast at Woodbend Hall. Kids will also be invited to complete Christmas themed crafts while parents continue to enjoy the company of community members. Tickets will be available online and at the door.

Learn More About Local Events

Visit your community hall's social media or website for more details on events.



AGRICULTURE

COW PARSNIP VS. GIANT HOGWEED (AND OTHER APIACEAE PLANTS)

Giant Hogweed always causes a stir, and rightfully so! Exposure to the plant's sap can cause redness and inflammation, severe skin burns, eye damage, and phototoxic (light-sensitivity) reactions for years after contact. Luckily for those in Parkland County, according to Alberta Agriculture and Forestry, all plants reported as giant hogweed in Alberta have been proven to be cow parsnip.

Cow parsnip, giant hogweed, spotted water hemlock and poison hemlock share a family — the carrot family, Apiaceae — and grow in similar conditions. It is important for those with livestock, children or

pets to identify which they might see on their land, as some plants can cause harm.

Clothes, skin and personal protective equipment should be washed after contacting any of these plants. If you have symptoms, it is recommended to seek medical attention for proper treatment. If you notice Giant Hogweed, please report it to Parkland County's Agricultural Department by calling 780-968-8467.

1. Giant Hogweed (*Heracleum mantegazzianum*)

- A prohibited noxious weed in Alberta
- Grows 3 – 6 metres tall
- Stem is 3 – 10 cm in diameter
- Umbel flowers are up to 1 metre across, and umbrella shaped
- Toothed, alternate leaves, deeply lobed leaves that look like a hand with fingers, spanning 150 cm or more. Underside covered in coarse white hairs
- Stem has many purple spots and stiff bristly hairs

2. Cow Parsnip (*Heracleum maximum*)

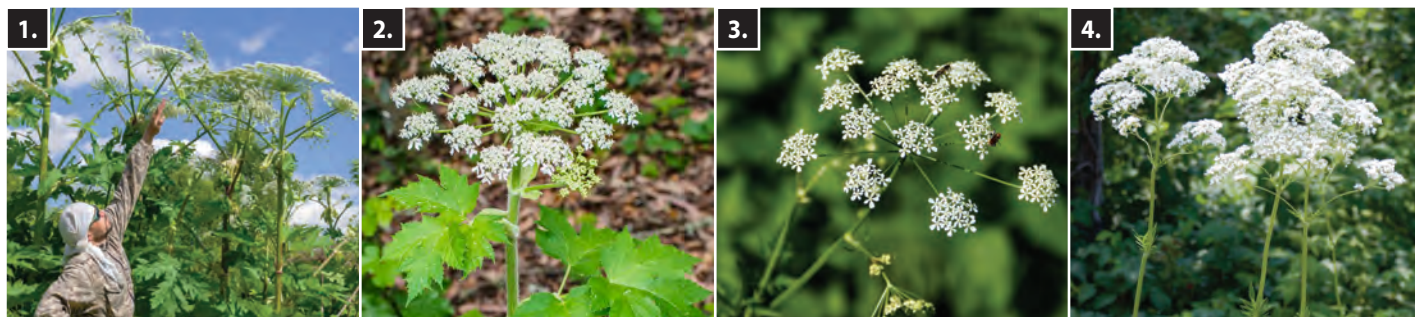
- Even though they are cousins, cow parsnip is not as nasty, but care should still be taken when handling them as their sap can cause rashes, blistering and sensitivity.
- Grows 1 – 2.5 metres tall
 - Stem is 2.5 – 5 cm in diameter, has few purple areas, deep ridges and fuzzy hairs
 - Umbel flowers are up to 30 cm across and flat-topped
 - Palmate-shaped, compound leaves, similar to a maple leaf — divides into three segments, covered in soft hairs
 - Native and common in Parkland County — pollinators love it!

3. Spotted Water Hemlock (*Cicuta maculata*)

- Native to Parkland County
- Grows 100 cm high
- Stem is round or slightly angular with purplish lengthwise streaks
- Leaves are twice compound with many leaflets and sharply toothed edges (margins). Vein goes to notches between the teeth on margins
- Umbel flowers, grows 12 cm in diameter. White flowers with four to six petals
- Extremely poisonous to people and livestock

4. Poison Hemlock (*Conium maculatum*)

- Herbaceous perennial plant
- Grows between 5 – 10 feet
- Stems are hairless, hollow, smooth and purple splotched, smells unpleasant when broken
- Leaves are alternate, divided into three to four leaflets, oblong and lacy with a triangular shape. They are also hairless
- Tiny, white flowers in loose clusters in compound umbels
- All parts are extremely poisonous to people and livestock, dried stems are toxic for 3 years



Wetland Replacement Program

Wetlands are highly productive ecosystems that are essential for protecting water quality, providing habitat for wildlife, and reducing the impacts of flood and drought by providing increased water storage. Parkland County has lost approximately 56% of our previous wetland area since the 1950s. We now have a unique opportunity to re-establish wetlands in our area through the provincial Wetland Replacement

Program. Funds that have been collected to compensate for wetland loss can now be accessed and used for wetland construction and restoration projects.

If you own agricultural or vacant land with a drained wetland you want to restore, or if you would like to see a wetland in your area, email sustainability@parklandcounty.com or call Environmental Services at 780-968-8888 ext. 8236.

DUTCH ELM DISEASE

Dutch Elm Disease (DED) is a devastating and deadly disease affecting Elm trees, causing huge losses in tree canopy. The City of Edmonton confirmed the sixth case of DED in the area since 2024, which has been isolated, removed and disposed of with special handling procedures.



To protect your elm trees and those in Parkland County, here are some things you can do:

- Monitor your trees for signs of disease:
 - In later summer, watch for leaves that droop, turn yellow and drop prematurely.
 - Check for beetle holes the diameter of pencil lead, and/or sawdust on the bark.
 - Watch for brown staining on the sapwood, seen when removing bark of infected trees.
- Do not bring firewood from other jurisdictions, as it can carry the disease to other areas. "Burn it where you buy it."
- Remove bark beetle habitat.
- Provincial law requires elms to be pruned only between October and March.
- All Elm must be disposed of immediately by burning, burying, chipping or disposal at a Parkland County Transfer Station (please indicate that you have elm in your material).

If you see signs of Dutch Elm Disease in Parkland County, please contact us 780-968-8467 or agriculture@parklandcounty.com. If you see signs of DED in other parts of the province, call the STOPPED hotline 1-877-837-ELMS (3567).

YOUR FARM, YOUR PLAN, YOUR EFP



Improve your on-farm awareness of agricultural environmental risks with an environmental farm plan of your own.

@AlbertaEFP
albertaefp.com

780-968-8888 ext. 8286 (EFP Technician at Parkland County)



Join
ALUS

Chad Ritter
ALUS Coordinator, Parkland County
780-968-8888 ext. 8286
chad.ritter@parklandcounty.com
ALUS.ca

THE ALUS ADVANTAGE
**COMMUNITY LEADERSHIP
DELIVERS LOCAL SOLUTIONS**

**SUSTAINING AGRICULTURE, WILDLIFE, AND NATURAL SPACES
FOR COMMUNITIES AND FUTURE GENERATIONS**

ALUS helps cost-share the establishment of beneficial management projects, providing an annual payment for the management and maintenance of the projects. We also provide support for Environmental Farm Plans (EFPs), and additional funding program support.

ALUS
PARKLAND

SPRUCE UP YOUR STOREFRONT

BEFORE OCTOBER 31, 2025!

A refreshed storefront does more than improve appearances — it brings energy to the entire community. Attractive, well-maintained businesses help create a vibrant streetscape that draws people in, encourages foot traffic, and keeps customers coming back.

Parkland County's Business Revitalization Program is designed to support local rural storefront businesses. Eligible applicants can receive up to 50% of their project costs, up to a maximum of \$3,500, to help cover expenses that enhance the aesthetics and curb appeal of their permanent structures.

Visit www.parklandcounty.com/BRP to learn more today. All project work must be completed and proof submitted by October 31, 2025.

This could include:

- Entrance enhancements
- Signage
- Window decals
- Outdoor murals
- Streetside paint or renovations
- Bike racks
- Outdoor furniture

And more!



Angus Oliver Luxury Sheepskins



NEW RCMP NON-EMERGENCY LINE NOW AVAILABLE ACROSS ALBERTA

As of April 2025, Alberta residents can now report non-emergency crimes by calling 310-RCMP (7267) — a new province-wide number that connects directly to the Alberta RCMP Operational Communication Centre. This initiative is designed to simplify the reporting process, reduce confusion about which detachment to contact, and help ensure 911 remains available for true emergencies. The line is toll-free, requires no area code, and is accessible from any phone within Alberta.

In Parkland County, residents are encouraged to use 310-RCMP to report non-urgent incidents such as minor vehicle collisions, property damage under \$5,000, or break-ins that have already occurred. These reports still receive a police response but help prioritize frontline resources for high-risk situations. Non-emergencies can also be reported online through the Alberta RCMP app or at www.grc-rcmp.gc.ca/ab

“These reports still receive a police response but help prioritize frontline resources for high-risk situations.”



RESPONSIBLE PET OWNERSHIP DAY

Join the Spruce Grove Veterinary Clinic and Parkland County Animal Shelter staff for a fun, educational event in honour of Responsible Pet Ownership Day!

Saturday, September 27 from 10 am – 2 pm
at the Spruce Grove Veterinary Clinic parking lot (5 South Ave, Spruce Grove).

- Free BBQ
- Pet friendly (on-leash)
- Cat and dog microchipping for a \$20 donation (proceeds go to a local rescue)
- Giveaways
- Chat with a Community Peace Officer

Bring your furry friend and we'll see you there!



www.parklandcounty.com/PLANit

PLANit is our online tool that allows you to manage all your applications for your home, your business and your land. Apply for building and development permits, check the status of your application, pay online, book inspections and more.

NEED ASSISTANCE SUBMITTING YOUR APPLICATIONS, OR HAVE OTHER QUESTIONS?

We have dedicated Planning Advisors on-site to answer any questions you may have regarding Building and Development permits. Just stop by the front lobby of Parkland County Centre anytime from 8:30 am to 4:30 pm — no appointment necessary!



THE BEST SPOTS FOR FAMILY PHOTOS IN FALL



Autumn in Parkland County is truly a special time. With golden hues and crisp air, it's the perfect time to capture warm family memories with breathtaking backdrops. Here are our top six favourite places to consider for your next family photoshoot:

1. CHICKAKOO LAKE RECREATION AREA

With native aspens and poplar groves, Chickakoo Lake absolutely blossoms in fall. Think tree tunnels of yellow leaves and soft woodland light. It's ideal for strolling shots, playful captures, or relaxed posed portraits.

Location: 1228 TOWNSHIP RD 534

2. CONSTABLE CHELSEY ROBINSON DAY USE PARK

Located right along the beautiful North Saskatchewan River, Constable Chelsey Robinson Day Use Park is a photographer's dream for family photos. The rocky ground, towering trees, and warm autumn colours are the perfect place to capture your family's love.

Location: 2303 TOWNSHIP RD 510

3. MUIR LAKE

Just minutes north of Spruce Grove, Muir Lake Secondary Day Use Park offers a peaceful, open setting ideal for fall photos. Framed by golden trees and tall grasses, Muir Lake offers a natural, rustic backdrop. If you're looking for a quiet, charming location for serene family portraits, Muir Lake is it!

Location: 27429 TOWNSHIP RD 540

4. WABAMUN LAKE

If sunsets and piers are more your vibe, Wabamun Lake offers both! With the shoreline glowing in autumn colour and the pier stretching into the horizon, it offers both dramatic wide-angle photo opportunities and cozy family moments. The nearby park adds variety, with trees, benches, and lakefront charm all in one spot.

Location: 5119 50 ST, WABAMUN

5. SOMERSET FARMS

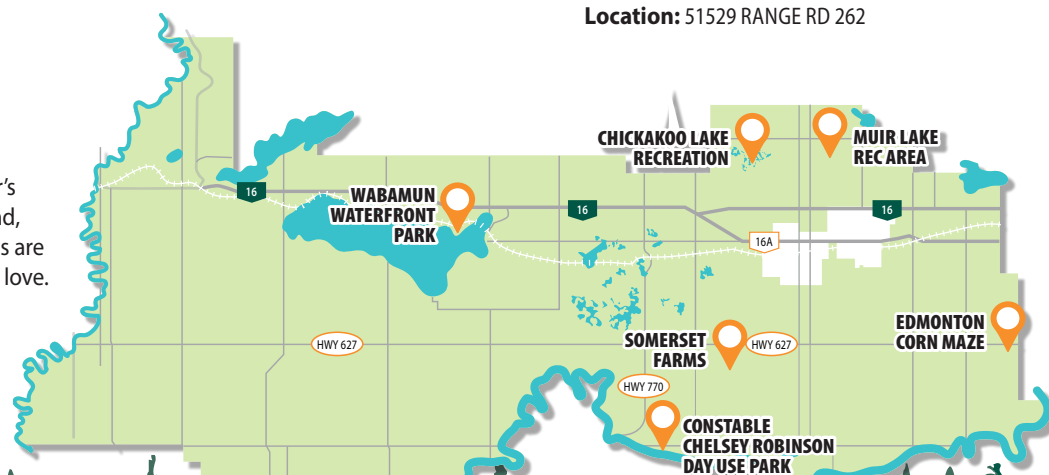
What could be more quintessentially Autumn than family photos in a pumpkin patch? Capture beautiful candid moments with campfires, sunflowers, and hay fields in the background. The farm even sets aside pumpkins for use by photographers during the months of September and October once their picking fields are closed. Learn more about photography sessions and associated fees on their website at www.edmonton-pick-a-pumpkin.com.

Location: 1423 TOWNSHIP RD 514

6. EDMONTON CORN MAZE

Turn your family outing into beautiful memories by bringing your photographer with you to the Edmonton Corn Maze! While you run through the stalks of corn, you're sure to capture endless smiles and candid moments.

Location: 51529 RANGE RD 262



Edmonton Corn Maze



Constable Chelsey Robinson Day Use Park



Wabamun Waterfront

Somerset Farms

TIPS FOR A SUCCESSFUL FALL PHOTO SESSION

Plan for golden hour: Shoot shortly after sunrise or before sunset when the light is softer and warmer.

Dress smart: Coordinate outfits that complement autumn colours. Think warm tones, neutrals, layers, and cozy textures.

Consider crowds: If the idea of having your photoshoot with others around causes nerves, consider weekday sessions to avoid crowds.

Book your photographer early: Fall is a popular time for family photos! If you've got your heart set on a particular photographer, be sure to book them early.

Permits and access: Some locations listed above are public day-use areas with free access; others are paid admission or have a fee. Make sure you've got tickets if needed to ensure your session can go ahead as planned!

If you share your photos on social media, we'd love to see them! Use the hashtag #exploreparkland or tag '@parklandcounty' on Instagram.



Subscribe



TO THE PARKLAND COUNTY eNEWSLETTER

FOR A CHANCE TO WIN!

SLOW DOWN. BREATHE. ESCAPE TO THE FRONTIER.



GIFT CERTIFICATE INCLUDES:

- Two nights in the cozy Frontier Cabin
- 1 firewood bundle for your private firepit
- S'mores for two under the stars

Visit www.parklandcounty.com/eNewsletter

**Contest
Draw
Sept. 30**

**OPEN
YEAR-ROUND**
Experience every
season in rustic
comfort.

Subscribe



to the Parkland County eNewsletter for a CHANCE TO WIN!

Subscribe to our eNewsletter and be entered to win a two-night stay at Boone Frontier Homestead & Organics located in Parkland County. Tucked away in the quiet countryside within 10 minutes of Seba Beach and Wabamun Lake, this off-grid micro-cabin offers a private retreat on a working homestead. Enjoy your two-night stay with a firewood bundle and s'mores included. Those who subscribe to the eNewsletter by September 29 will be entered to win.



Visit www.parklandcounty.com/eNewsletter

