

YOUR PARKLAND

2025 SUMMER

Keeping you connected with your County

LET'S TALK ABOUT YOUR TAX DOLLARS

Budget Survey Out Now!
Page 4

Cover photo: Pembina River Provincial Park

GIVE YOUR BUSINESS A SUMMER GLOW-UP

Page 7

STAYING FireSmart™

Page 11

SUMMERTIME IN THE COUNTY

Page 8



parkland
county

FireSmart, Intelli-feu and other associated Marks are trademarks of the Canadian Interagency Forest Fire Centre (CIFFC).

CONTENTS

2025 Election

5

Give Your Business
a Summer Glow-Up

7

Climate Resilient
Home Improvements

12

Parkland County
Libraries

15

Supporting Our
Not-for-Profit Organizations

16

Parkland's Must-Visit Nurseries

22

UPCOMING OFFICE CLOSURES

Canada Day: July 1
Heritage Day: August 5
Labour Day: September 1

PROCLAMATIONS

To view monthly proclamations, please visit
www.parklandcounty.com/Proclamations



RED DRESS DAY



TRI-REGION VOLUNTEER APPRECIATION WEEK



COMMUNITY LEAGUE VOLUNTEER OF THE YEAR EVENT



EMERGENCY PREPAREDNESS DAY

You can now receive monthly County updates directly to your inbox! Be sure to sign up for our monthly e-newsletter by visiting www.parklandcounty.com/eNewsletter



REACH OUT OR FOLLOW US:

Find out more on what's happening in Parkland County, follow us or visit parklandcounty.com

OFFICE HOURS:

Monday – Friday; 8:30 am – 4:30 pm
T: 780-968-8888
E: hello@parklandcounty.com

53109A HWY 779
Parkland County, AB T7Z 1R1



Parkland County Mayor and Council (L – R) Councillor Natalie Birnie, Councillor Kristina Kowalski, Councillor Sally Kucher Johnson, Mayor Allan Gamble, Councillor Phyllis Kobasiuk, Councillor Rob Wiedeman.

MESSAGE FROM MAYOR AND COUNCIL

We hope you're loving the longer days and warmer weather that this season brings! Summer is a time to reconnect with the land, enjoy the outdoors and celebrate all that makes Parkland County such a vibrant place to call home. Whether you're exploring our trails, relaxing at the Entwistle Outdoor Pool, spending time on the lake or supporting local events, there's something for everyone to enjoy this season. We encourage you to take full advantage of the natural beauty and community spirit that surrounds us. Our tourism website, www.exploreparkland.com, is a great place to find new spots to discover this season!

We want to thank our residents for your continued engagement and care throughout the year. Thanks to input from our community and endless hard work, our incredible project teams completed two major milestones – updating the Municipal Development Plan and the Land Use Bylaw. These updated plans and bylaws are now in place and will help to guide future growth and decision making in Parkland County. Please visit our website for more information.

Your involvement helps shape a stronger, more connected community. As we plan for next year's budget, we want to hear about your priorities and where you think we should be investing your tax dollars. From now through to early July, we are inviting you to take our annual Budget Survey and tell us what matters to

you. You can learn more about the survey on page 4 — your feedback will help ensure that tax dollars are going towards resident priorities.

Also featured in this issue are community events, support for small businesses, updates from Fire Services, agricultural information and more — so be sure to keep reading!

As always, we remain committed to serving you and working together toward a bright future for all. On behalf of Council, have a safe, relaxing and joy-filled summer! Come fall, we will be entering municipal election season. For details about keeping informed throughout this process, please flip over to page 5.

Parkland County Mayor and Council

We acknowledge that we are located on the lands of Treaty 6 which is the traditional home of the Cree, Dene, Saulteaux, Blackfoot, Nakota Sioux nations, members of the Métis nations of Alberta, Inuit and all First Nations sharing this land for generations. We recognize the long history and contributions of Indigenous peoples who've cared for this land from time immemorial to the present. We acknowledge that we are all treaty people bound to one another by the spirit and intent of treaty as long as the sun shines, the grass grows and the river flows.

LET'S TALK ABOUT YOUR TAX DOLLARS



Each year, we work hard to balance the budget while delivering services that matter most to our residents and businesses. By taking a few minutes to complete our [budget survey](#), you'll help guide the decisions that impact your community, your priorities and your everyday life.

Your feedback really does make a difference! In last year's budget survey, 60% of respondents told us they support working with our neighbouring municipalities to share the costs of key services like

emergency response, libraries and recreation — so that everyone can access more programs and facilities.

That input helped guide our 2025 budget. Parkland County continues to partner with Stony Plain, Devon and Yellowhead County through Fire Agreements and we help fund shared facilities like the Tri Leisure Centre in Spruce Grove, the Devon Arena and Pool and the Yellowhead Arena. We also contribute to local library services through the Parkland County Library Board and the Yellowhead Library system.

Budget Survey

MAKE SURE TO HAVE YOUR SAY!

The survey is open until July 4, 2025. Visit yourparkland.ca/Budget to get started. Residents who complete the survey will be entered to win one of two gas gift cards valued at \$250.

PROPERTY TAXES DUE JUNE 30, 2025

The 2025 Property Assessment & Taxation Notices were mailed out on May 1, 2025. If you haven't received your notice, please give us a call at 780-968-8888 or send us an email at hello@parklandcounty.com — we're happy to help. Just a heads-up: not receiving your notice doesn't exempt you from paying,

so if you're missing yours, let us know as soon as possible.

“Where do my tax dollars go?”

Property taxes are due by June 30, 2025. Be sure to pay on time to avoid any penalties. You can pay at our office, at the bank, by mail, via online banking or by signing up for our monthly plan.

Did you know the County collects taxes for both the municipality and on behalf of the Provincial Government and Seniors' Foundation?

It's true! Approximately 30% of your property tax is for the province's education tax and approximately 1% is for the Senior's

Foundation. This year, Parkland County kept the municipal residential tax rate increase to just 1.37%, however, residents may experience larger overall increases due to higher education and senior's foundation taxes, or to other factors including changes to their property's assessed value.

To learn more about your property taxes, please visit www.parklandcounty.com/Taxes

JUNE
30

TAXES ARE DUE ON OR BEFORE MONDAY, JUNE 30, 2025.

MUNICIPAL SERVICES

- Infrastructure Services
- General Government
- Community Services
- Protective Services
- Development Services

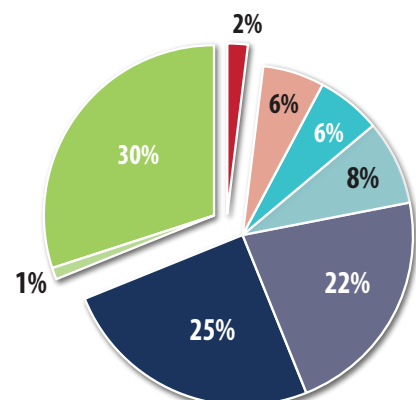
■ RCMP

REQUISITIONS COLLECTED ON BEHALF OF OTHERS

- Education Tax
- Senior's Foundation

Parkland County has no control over education or seniors' lodge services and is only responsible for levying them.

Pursuant to Section 311 and 336 of the Municipal Government Act, Notice is hereby given that the combined 2025 Property Assessment & Taxation Notices for Parkland County were mailed on May 1, 2025.





2025
ELECTION

HELP SHAPE THE FUTURE OF YOUR COMMUNITY!

Nominations for the next Parkland County mayor and six divisional councillors, as well as Parkland School Division school trustees, are open! Interested in running? This is your chance to make a difference and represent your community.

The Nomination period runs from January 1, 2025, through to Nomination Day, which takes place September 22, 2025, from 10 am to 12 pm. Prior to Nomination Day, you must book an appointment with the Returning Officer to submit your completed nomination form. A \$100 deposit must be provided to the Returning Officer with your Nomination Paper.

Parkland County accepts the nomination for Parkland County Council and Parkland School Division. The Candidate Information Guide is available from the Elections Office at Parkland County Centre, or from our website at

www.parklandcounty.com/elections. Parkland School Division School Board Election Handbook will be available on their website at www.psd.ca/board/election-2025.

Parkland County conducts the vote for school trustees under joint agreements. If you're interested in running for a school trustee position for either Evergreen Catholic Separate Regional Division or St. Thomas Aquinas Roman Catholic Schools (separate schools), please visit their respective websites for further information.

ARE YOU REGISTERED TO VOTE?

Make sure you're registered and that your information is up to date so that you're ready to vote in the municipal election. Visit www.parklandcounty.com/Elections

QUESTIONS ABOUT THE ELECTION?

Contact the Returning Officer at elections@parklandcounty.com or call 825-963-5170.

ADVANCE VOTING

October 10, Muir Lake Hall, 4 pm – 8 pm

October 11, Jubilee Hall, 10 am – 4 pm

October 14, Clymont Hall, 4 pm – 8 pm

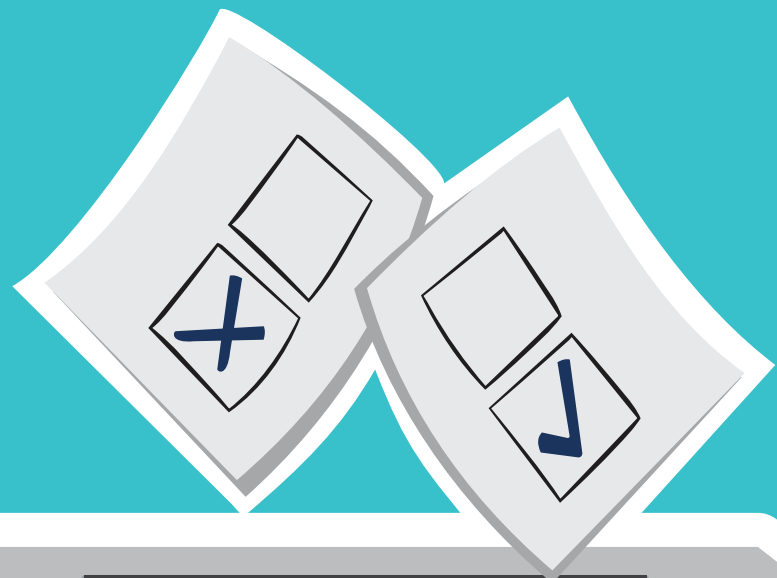
October 14, Muir Lake Hall, 4 pm – 8 pm

October 16, Jubilee Hall, 4 pm – 8 pm

October 18, Clymont Hall, 10 am – 4 pm

October 18, Muir Lake Hall, 10 am – 4 pm

WHERE TO VOTE APP coming soon — keep an eye on our website.



Election Day is Monday, October 20, 2025

COMMUNITY LEAGUE EVENTS

COMMUNITY EVENTS

If you're looking to connect with your community or want to advertise a community event, be sure to check out our Community Events Calendar at events.parklandcounty.com

GRAMINIA HALL

GRAMINIA HALL
51101 RANGE ROAD 270

Graminia Kids Carnival

June 14

Time: 11 am – 3 pm

GOLDEN SPIKE HALL

51302 RANGE ROAD 275

Family Day at Golden Spike Hall

Saturday, June 21

Time: 10 am – 3 pm

- Games
- Bouncy castle
- Silent auction
- Concession

For more information, call Marilyn at 780-963-7361

TOMAHAWK SPORT AND AGRA CENTRE

TOMAHAWK SPORT AND AGRA CENTRE

3rd Annual Tomahawk Farm Day

Saturday, June 21

Market: 11 am – 4 pm

Fortis BBQ: 12 pm – 3 pm

- Bouncy House
- Face painting
- Caricatures 12 pm – 4 pm

Please contact community halls directly for additional information



CANADA DAY CELEBRATION IN ENTWISTLE

JOIN US FOR A DAY OF FUN CELEBRATING THE COUNTRY WE CALL HOME AT ENTWISTLE COMMUNITY HALL!

Market: 10 am – 4 pm

Parade: 12 pm (staging starts at 11 am with judging at 11:30 am, no parking available on parade route)

ACTIVITIES

- Car Show and Shine, burgers and birthday cake following parade
- **Bouncy house and activities:** 1 pm – 4 pm
- **Family swim:** 1 pm – 2:15 pm at the Entwistle Outdoor Pool
- **Public swim:** 2:30 pm – 5:30 pm
- Fireworks at dusk!

LOVE WHERE YOU LIVE

NEIGHBOURHOOD BLOCK PARTIES

Get to know your neighbours and make the most out of summer by hosting a Love Where You Live event! Our Block Party Program provides you with our planning guide, funding, Fun Bag loan and other resources to help you host a fun neighbourhood hangout. Visit www.parklandcounty.com/LoveWhereYouLive for more information.

GIVE YOUR BUSINESS A SUMMER GLOW-UP

Summer is here and it's the perfect time to refresh your storefront! Parkland County's Business Revitalization Program is back, covering up to 50% of eligible project costs, to a maximum of \$3,500 to help local businesses improve the look of their exteriors. From updated signage to new paint, this program supports projects that make our communities more vibrant and welcoming.

RIVERSIDE DINER AND LOUNGE USED THE BUSINESS REVITALIZATION PROGRAM

(photos right)

Riverside Diner and Lounge used the Business Revitalization Program to give its exterior a modern refresh by enhancing their front entrance with new wood frame columns. The improvements made a noticeable aesthetic impact, drawing in more hungry visitors.

ANGUS OLIVER LUXURY SHEEPSKINS REVITALIZATION PROGRAM

(photos below)

Angus Oliver Luxury Sheepskins revamped its entrance and outdoor retail area thanks to the Business Revitalization Program. The revitalized storefront has added warmth and visual appeal to the space, making it more inviting for both locals and tourists alike.



BEFORE



AFTER



SWEET SUMMERTIME IN PARKLAND COUNTY

OUTDOOR POOL SEASON

Make a splash this summer at the Entwistle Outdoor Pool! Whether you're looking to cool off, take swim lessons, or just enjoy some fun in the sun with family and friends, this community favourite is the place to be. Check out our schedule and dive into the season, visit www.parklandcounty.com/Pool





LADYBUG RELEASE

July 17, 1:00 pm – Wabamun Library, 5132 53 Avenue

Have you noticed signs of stress in your garden, such as yellowing and/or curled leaves? Do your plants feel sticky and look dirty? If so, you likely have an aphid infestation.

During hot and dry summers, plants become more stressed — making them more susceptible to attacks. An aphid infestation will not only hurt your plants but can also attract more unwanted pests, such as wasps. Although there are several options for aphid control, ladybugs can be used as an effective form of biocontrol.

These helpful insects are a natural predator of aphids and will help keep the population down. A single ladybug can eat up to 50 aphids a day! This biological control is a great alternative to pesticides, which can harm more than just the intended targets. To encourage ladybug populations in your yard, make sure to leave natural debris, like leaf litter, that can provide habitat. A healthy ladybug population will help control aphids naturally and requires little effort on your part.

Parkland County is hosting our third annual Ladybug Release to educate residents on these helpful little critters. Attendees will be given their own ladybugs to release either at the event or at home. There will also be other fun activities like rock painting and colouring! Join us at the Wabamun Library on Thursday, July 17, at 1:00 pm for this fun and informative event.

Please register your family in advance so we can ensure enough ladybugs are ordered for everyone. The link to register can be found at www.parklandcounty.com/LadybugRelease



GRASSFIRE NEAR DUFFIELD

“ It’s crucial that residents stay alert and stay prepared for the risks of wildfires during these warmer months. We each need to do our part to keep our community safe.”

– Sean Cunningham,
Acting Fire Chief.

On Tuesday, May 6, Parkland County fire crews responded to a grassfire near Duffield. Thanks to the fast response and hard work of our firefighters, the wildfire was classified as under control by the morning of Thursday, May 8. We’d like to thank our firefighters for their dedication and commitment to keeping our community safe!

On Sunday, May 18, crews also responded to a fire in the trail system at Prospectors’ Point. The fire was quickly contained and was extinguished the following day.

Thinking of burning? Make sure you always check the Fire Hazard Level on our website prior to letting any sparks fly. This can be found www.parklandcounty.com/FireHazard

OHV SAFETY

It’s also important to be mindful of potential wildfire risks when riding off highway vehicles (OHVs). You can reduce the risk of your vehicle causing a wildfire by following these simple steps:

- Before you ride, clean out hot spots and remove debris from your machine.

- After riding through muskeg or tall grass, stop and remove any build-up.
- Carry firefighting equipment such as a small shovel, collapsible pail or fire extinguisher.
- Wash your OHV and keep it clean (do not wash in streams and creeks).
- Make sure your muffler and spark arrestor are working properly.
- Stop frequently. Take the time to knock debris from your machine’s hot spots. If the debris is smouldering, soak it, stir it and soak it again to make sure it is extinguished.

www.parklandcounty.com/OHV

ARE YOU READY?

MAKE A PLAN

BUILD A KIT

STAY INFORMED

PREPARE NOW — LEARN HOW!



DO YOU HAVE AN EMERGENCY PLAN IN PLACE FOR YOUR FAMILY?

WHAT ABOUT FOR YOUR PETS AND LIVESTOCK?

IS THERE A TO-GO BAG READY IN YOUR HOME?

Visit www.parklandcounty.com/EmergencyPreparedness for more helpful information.

Emergencies can happen at any time, so it’s important to be as prepared as possible! Start by making a plan and prepping a bag. Here’s some suggestions on what to include:

- | | | |
|--|----------------------------|---|
| ✓ Medication | ✓ Cash | ✓ Clothing |
| ✓ Important documents
(ID, passport, insurance) | ✓ First aid kit | ✓ Personal hygiene and sanitation items |
| ✓ Water/food | ✓ Important personal items | ✓ Supplies for pets |



BEFORE



AFTER



ALBERTA

FireSmart™ YOUR PROPERTY

FireSmart Canada is a national program that helps Canadians increase neighbourhood resilience to wildfire and minimize its negative impacts. Book a free FireSmart Advanced Home Assessment and our trained team will make a personalized plan for your land that could reduce the risk of wildfire damage. You can book online at www.parklandcounty.com/FireSmart

KEEPING CAMP FIRESMART

Staff from Camp Yowochas, located outside of the Hamlet of Fallis, and members of the Parkland County Fire Services team spent a day in April using principles from the FireSmart program to ensure

the safety of campers during the busy summer months. The crews cleaned up dead vegetation and down trees from around some of the camp's important infrastructure to create a space that protects the buildings in the event of a potential wildfire.

This involves creating a "buffer zone" around the property by managing vegetation and other potential fuel sources (like stacked firewood or patio furniture) to reduce the risk of fire reaching structures. This buffer zone, also known as the Home Ignition Zone, helps slow or stop wildfire spread and provides firefighters a safer area to work.

FireSmart, Intelli-feu and other associated Marks are trademarks of the Canadian Interagency Forest Fire Centre (CIFFC).



FIRE RECRUITMENT

Ready to answer the call?

Parkland County will be recruiting paid-on-call firefighters this fall! If you're passionate about helping others, love teamwork and want to make a real impact in your community, this could be the opportunity for you.

Keep an eye on www.parklandcounty.com/Recruitment or our social media for upcoming information.

PROTECTING YOUR WATERFRONT

There has been an increase in residential development around many of the lakes and other water bodies in Parkland County. Quick access to gorgeous views and recreational opportunities are major reasons why year-round waterfront living has become so popular.

But, with new development comes added pressures on the lakes and surrounding environments. These changes can often lead to a decrease in water quality and aquatic health. With this decline often comes blue-green algae spikes, making the water unsafe for us to enjoy. It is important that we all do our part to protect the waters we love. For those living directly on a lake, there are many ways you can enjoy the lakefront benefits and protect the environment.

Restoring or preserving your shoreline with a riparian buffer will help to improve the water quality of the lake and protect your property from erosion and flooding. Unlike typical lawns and artificial beaches, natural vegetation can absorb and filter pollutants, such as excess fertilizer before they reach the lake. When designing a buffer, a minimum 30-meter width is recommended. The larger the buffer the better, however, any width is better than none. More benefits provided by shoreline buffers are listed below. Please note that work in and around water bodies may require regulatory approval. Checkout the "Waterfront Living" page on the Parkland County website for more tips on how to protect our lakes!

BENEFITS OF ESTABLISHING A LAKEFRONT RIPARIAN BUFFER

- Improved water quality
- Increased wildlife biodiversity, habitat and connectivity
- Decreased shoreline erosion
- Protect and possibly increase property value and aesthetics
- Flood protection and mitigation
- Less maintenance for landowners than lawns

BUFFER DESIGN

- A.** Trees like poplar (15 – 25m) and Birch (10 – 15m) can be planted strategically to preserve your view and stabilize the soil.
- B.** Paths should be made of permeable materials and meander along the slope instead of straight down.
- C.** Wildflowers like goldenrod (1m) and fireweed (1.5m) add habitat for pollinators.
- D.** Some local species to plant include red osier dogwood (1 – 4m), wild rose (1.5m) and willow species like sandbar (4 – 6m) and beaked (0.5 – 10m).

- E.** Plants in the lower areas including cattails (1.5– 3m), sedges (up to 1m) and other aquatic species will often revegetate on their own.
- F.** If you build a dock, try less damaging options like a raised dock.



CLIMATE RESILIENT HOME IMPROVEMENTS



Due to changing climate, the risks of heat, wildland fire and smoke, flooding, droughts and extreme weather are expected to increase in our region. Climate resilient home improvements can increase your safety and comfort while decreasing the risks of damage by climate events, potentially saving you money long-term. Here are some home improvements you can make for various risks:

EXTREME HEAT

- Insulate walls and attics
- Use higher R-value materials when replacing exterior insulation and siding
- Plant deciduous trees on the south, east and west exposure to provide shade in accordance with FireSmart™ principles

WILDLAND FIRE AND SMOKE

- Use fire-resistant roofing, sidings, windows and doors
- Regularly clean the roof and gutters of combustible materials

- Use an indoor air purification system and/or air-purifying houseplants
- Enclose the underside of balconies and decks with flame-resistant materials

Completing a FireSmart™ Assessment is a fantastic way to learn how to reduce the risk of damage by wildfire on your property, learn more on page 11.

FLOODING

- Use flood-resistant materials for walls, ceiling, insulation, flooring and doors

- Install eavestroughs and downspouts; ensure downspouts direct water well away from your house
- Install a backwater valve and/or a sump pump

DROUGHT

- Plant drought-tolerant flowers, shrubs, and trees
- Use a rain barrel to collect and store rainwater
- Water conservation — learn more on the next page

EXTREME WEATHER

- Hail and wind-resistant roofing and siding
- Impact-resistant windows and doors
- Install protective shutters outside windows or use a safety film
- Securely anchor outdoor furniture, accessories, and equipment
- Plant a windbreak

You can visit www.climateresilienthome.ca to select which climate impacts to consider and evaluate cost and involvement. For more ways to increase your climate resilience, visit www.parklandcounty.com/ClimateAdaption

FireSmart, Intelli-feu and other associated Marks are trademarks of the Canadian Interagency Forest Fire Centre (CIFFC).

Roadside Mowing

When it comes to roadside mowing over the summer months, safety and weed control are top priorities. Due to the large land base of the County and the size of our mower fleet, some roads may not be mowed until later in the season. Each year, mowers are sent to different sections of the County and spread out on a rotational basis. Collector roads are given priority and are mowed more than once per season for safety considerations on high traffic roads.

We are not able to determine exactly when mowers will arrive in a specific area. Please ensure that all road signs without a permit are removed. Parkland County will remove and dispose of any unpermitted signs left within the road allowance.

Agricultural Bursaries

Agricultural Services provides five bursaries of \$500.00 each to students living in the County who are attending University, Community College or any other recognized post-secondary institution and enrolled in an agri-based program. Applications close September 19, 2025 at 4:30 pm.

RMA Scholarship

The Rural Municipalities Association (RMA), an organization representing Alberta's incorporated rural municipalities, offers a scholarship program that supports rural students attending a recognized post-secondary institution. A scholarship of \$1,000 is presented to one successful applicant from each RMA district. Applications close August 31, 2025.



Find more information at www.parklandcounty.com/Scholarships

Agricultural Producers

Water management is an important part of farm operations and the production of quality crops. Consider an Environmental Farm Plan or other water conservation methods such as cover crops, rotational grazing, wetland retention or composting. Contact our ALUS Coordinator to learn more about Environmental Farm Plans and how you can get involved. Find contact details on the next page!





BUILD RESILIENCE

PARKLAND PRODUCERS GROWING NATURE

**SUSTAINING AGRICULTURE, WILDLIFE, AND NATURAL SPACES
FOR COMMUNITIES AND FUTURE GENERATIONS**

Over 1,700 producers have enrolled more than 52,000 acres of marginal and difficult to manage land with ALUS, reducing outputs and generating flood and drought mitigation, wildlife habitat, and other environmental benefits.

Chad Ritter
ALUS Coordinator, Parkland County
780-968-8888 ext. 8286
chad.ritter@parklandcounty.com

ALUS.ca    



UPCOMING COUNCIL MEETINGS

Stay up to date with Council meeting agendas, recaps and more by subscribing to receive email updates at www.parklandcounty.com/Meetings

COUNCIL MEETINGS GOVERNANCE AND PRIORITIES COMMITTEE MEETINGS

JUNE

S	M	T	W	T	F	S
1	2	3	4	5	6	7
8	9	10	11	12	13	14
15	16	17	18	19	20	21
22	23	24	25	26	27	28
29	30					

JULY

S	M	T	W	T	F	S
		1	2	3	4	5
6	7	8	9	10	11	12
13	14	15	16	17	18	19
20	21	22	23	24	25	26
27	28	29	30	31		

AUGUST

S	M	T	W	T	F	S
						1
						2
3	4	5	6	7	8	9
10	11	12	13	14	15	16
17	18	19	20	21	22	23
24	25	26	27	28	29	30

PARKLAND COUNTY LIBRARIES

WATCH FOR THE MOBILE LIBRARY IN JULY AND AUGUST!

July

July 3

Time: 10 am – 12 pm
Location: Wabamun Provincial Park

July 10

Time: 10 am – 12 pm
Location: Duffield area
(North of Hwy 16, South of Hwy 16,
Beach Corner, Blueberry)

July 28

Time: 10 am – 12 pm
Location: Tomahawk area
(Agra Complex, Township Road 512,
Tower Acres, Moonlake Hall)

July 30

Time: 10 am – 12 pm
Location: Entwistle area (Old Entwistle,
Pembina River Provincial Park)

August

August 11

Time: 10 am – 12 pm
Location: Graminia Hall,
Bunchberry Meadows,
Woodbend Community Hall

August 13

Time: 10 am – 12 pm
Location: Chickakoo Lake
Recreation Area

August 18

Time: 10 am – 12 pm
Location: Keephills area (Holborn Hall,
Mink Lake Campground)

At these mobile libraries, you can:

- Get a library card
- Return materials
- Find free books

Can't find us at one of the stops?
Call or text 780-966-4960

When
-in-
doubt
go to the
library

Summer Event

July 24

Time: 4:30 pm – 8 pm
Cost: free for all ages
Location: Keephills Library

- Colouring
- Lego
- Little's sensory play area
- Inflatable castle and obstacle course
- Concession stand available for purchases
- Yard games
- Axe throwing

*Bring bathing suit and towel for sprinkler
(weather dependent)*

SHARE YOUR FEEDBACK ON OUR LIBRARIES!

and priorities for the next few years. It reflects our commitment to being more than just a place for books, but a place — or a gateway — for people to come together to learn, explore and create.

We're excited to share that our five libraries — Duffield, Entwistle, Keephills, Tomahawk and Wabamun — are in the process of developing a new service plan.

This service plan is a roadmap that will guide our programs, services



To bring the vision to life, we need your input! Whether you use the library regularly or just stop in every now and then, we want to hear from you. What do you value? What's missing? How can we better serve you and your family — not just today, but into the future?

We appreciate you completing our short survey and thank you for your input. The survey can be found by scanning this QR code or visiting www.parklandcounty.com/Libraries



SUPPORTING OUR NOT-FOR-PROFIT ORGANIZATIONS

2026 Not-for-Profit Grant Program

At Parkland County, we see the incredible difference local not-for-profits make in our community every day. Through our Not-for-Profit Grant Program, we're here to support their efforts and help bring valuable programs and services to life for our residents.

This annual program is designed to help not-for-profit organizations deliver meaningful programs, services and events that enhance the quality of life across Parkland County. Whether it's supporting vulnerable residents, celebrating local culture or expanding recreational opportunities, the grant program is here to help bring those community-building initiatives to life.

Funding is available for a wide range of activities, including operational costs, minor capital projects, community-led initiatives and special events. To better support timely needs, Micro and Emergent Minor Capital grant applications are also accepted throughout the year.

All applications will be reviewed based on alignment with the County's strategic goals, the identified community need and the organization's ability to successfully carry out the proposed work. Full eligibility criteria and guidelines are available on our website.

To help applicants prepare strong proposals, attendance at one of our information sessions is required. These sessions will offer step-by-step guidance on the application process, explain funding priorities and answer any questions you may have. The next upcoming session is July 2 from 6:30 pm to 8:30 pm at the Parkland County Centre.

Registration for the information sessions is now open at www.parklandcounty.com/NFPgrant

The 2026 application period runs from May 21 to July 17, 2025. Late or incomplete submissions will not be accepted.

The County is proud to work alongside the dedicated organizations that help make our region vibrant, inclusive and full of opportunity. We encourage all eligible not-for-profits to apply and continue making a positive impact in our communities.





www.parklandcounty.com/PLANit

WORKING ON SUMMER PROJECTS?

PLANit Parkland is our online tool used to submit your application needs for your home, your business and your land. Apply for building and development permits, check the status of your application, pay online, book inspections and more.

CATS IN THE COUNTY

DOES YOUR RURAL PROPERTY HAVE A CAT OVERPOPULATION?

The Edmonton Humane Society's (EHS) Trap-Neuter-Return (TNR) program is an effective and humane way to manage community cat populations. The program involves humanely trapping outdoor, unowned cats, spaying or neutering them, vaccinating, ear-tipping and returning them to their original locations. This controls overpopulation

while allowing cats to remain where they are most comfortable.

This year, the EHS is focusing its TNR efforts within Parkland County. If you have feral cat colonies on/near your rural property, visit www.edmontonhumanesociety.com for more information and to submit a program request.

Looking for Cat Colonies

In Parkland County



CYBERSECURITY

Effective password management is crucial for safeguarding your personal and professional information online. Always create strong, unique passwords for each account, incorporating a mix of letters, numbers and symbols. Avoid reusing passwords or using easily guessed information like names or birthdays. Consider using a passphrase consisting of three or four words for added security. Additionally, enable two-factor authentication wherever possible to further protect your digital presence. By adopting these strategies, you make it significantly harder for others to compromise your online accounts.

Know your risks and stay safe online!



PROJECT UPDATES

LAND USE BYLAW REDESIGN

Land Use Bylaw 2025-12: approved and in effect!

Following a multi-year collaborative process, including two years of community engagement, Parkland County's new Land Use Bylaw (LUB) was adopted by Council following its third reading on May 27, 2025.

The new Land Use Bylaw 2025 – 12 is in effect. You can view the new Bylaw on the County's webpage www.parklandcounty.com/LUB. For a high-level overview, check out our User Guide.

Does the new LUB affect existing planning and development applications?

Applications received prior to the new LUB coming into effect will still be subject to the regulations of the previous LUB, Bylaw 2017 – 18.

Thank you!

On behalf of the project team, thank you to our community for your involvement in the LUB project over the past two years. Your input was invaluable in shaping the future of growth and development in the County!





WABAMUN WATERFRONT PROJECT

Exciting news! The Waterfront Park project is on track to be completed by the end of September, with all amenities planned to reopen at that time.

Our boat launch, pier and parking will be open for residents for the summer season.

CURRENT PROGRESS UPDATES, AS OF MAY 2025:

- Bathroom facilities are well underway and almost completed.
- The playground is currently under constructional review, as we are looking at options to add some new features to the space while fixing the current structure.

- The spay park will be getting an upgrade with new spray features that have been purchased and are awaiting installation.
- Beach front will be going through expansion and will be creating a bigger space for residents.
- The Wabamun Pier is under renovation.

More work will continue on the marina portion of this project, which is expected to be completed by fall of 2026.



FAMILY AND COMMUNITY SUPPORT SERVICES

Friday Night Youth Pool Parties

Get ready for some summer fun! Meet us there, or hop on the bus.
Ages 12 - 17 years.

Registration is required — space is limited to 30 youth.

Bus Schedule

July 4 and July 25

Wabamun pickup at 5:30 pm, Duffield at 5:40 pm

July 11 and August 15

Wabamun 5:30pm, Seba 5:50pm, Tomahawk 6:10pm

Bus cost: Parkland County residents \$5,
Non Residents \$10

Bus schedule to pool:

Departs at 5:30 pm

Bus return from pool:

Departs at 8:45 pm from the Entwistle Community
Recreation Centre

Activities:

Dryland activity and snack in the
Entwistle Community Recreation Centre
Multipurpose Room from 6:30 – 7:30 pm
FREE swimming from 7:30 – 8:30 pm

Dryland activities:

July 4: Nerf Battle

July 11: Outdoor Escape Room

July 25: Pressure Cooker Puzzling

August 8: Dessert & a Show
(Drop in only, no bus)

August 15: Tie Dye

FCSS Grants

Our FCSS programs provide funding to non-profit organizations that enhance the social well-being of individuals and families.

If you have child and youth programs, family life enrichment courses, senior's programs, information and referral programs or other social support programs that enhance the social well-being of individuals and families in our community, this grant may be available to you!

Visit www.parklandcounty.com/FCSS.
Applications close July 6, 2025 at noon.



Find more information and registration at www.parklandcounty.com/youth

Bridging Connections

Meet in person with a community Social Worker who will offer compassionate and confidential support. Assistance will be provided in identifying solutions, connecting residents to resources and navigating many of life's challenges.

Bridging Connections offers short-term counselling sessions the first Wednesday of every month for residents aged 16+.

Drop in or call 780-962-7618 to book an appointment.

Time: Wednesdays, 9 am – noon

- Second Wednesday of each month:
Entwistle Community Recreation Centre (4916 – 51 St)
- All other Wednesdays: Wabamun Community Centre (5217 – 52 St)



SUMMER CAMPS

Registration for our summer day camps is now open!
Cost for residents is \$125 for a 5-day camp. Camps are offered on various dates and at multiple locations throughout the summer.

Visit www.parklandcounty.com/SummerCamps to learn more and get the kids signed up for summer activities, games, challenges and crafts.



SAVE THE DATE



WABAMUN'S ANNUAL
OUTDOOR
MOVIE NIGHT!

FRIDAY, SEPTEMBER 19
7:00 PM

**THE
WILD
ROBOT**

LOCATION: WABAMUN'S COAL DIAMOND SPORTS PARK



Whether you're a seasoned green thumb or just planting your first flower bed, Parkland County is home to some of the most charming and diverse nurseries. You'll find a thriving community of growers and garden centres offering everything from rare perennials to hardy native plants, gorgeous house plants and fun garden décor. You'll also discover lots of friendly advice along the way!

CREEKSIDE HOME & GARDEN

If you're looking to blend home decor with your gardening passion, Creekside Home & Garden is your dream destination. It has everything you need and is open year-round. Not only do they offer a lush selection of plants, but they also carry home décor, patio accessories and giftware — making it easy to refresh both your garden and your living space. Have any questions? The staff are extremely knowledgeable and the website www.creeksidehomeandgarden.ca is full of helpful resources to ensure your plants are built for success.

Location:

51530 RANGE ROAD 260, PARKLAND COUNTY, AB, T7Y 1A9

BARAKA GARDENS

Located in a peaceful rural setting, Baraka Gardens is a hidden gem with a welcoming atmosphere and beautifully curated plant selection. Known for its commitment to being environmentally and health conscious, Baraka offers high-quality, locally grown options and gardening advice rooted in sustainability. You'll find their greenhouse packed with vibrant vegetables, herbs and flowers grown with love and zero chemicals. It's the perfect spot if you're looking to stock your garden with heirloom varieties or learn more about permaculture techniques.

Want to keep things local? Rest assured knowing Baraka's seeds, plants, trees, shrubs, garden supplies and tools are sourced from Canadian companies.

Location:

53222 RANGE ROAD 34 #1, DUFFIELD, AB, T0E 0N0

KIWI NURSERIES

A long-time local favourite, Kiwi Nurseries has been growing hardy trees, shrubs and perennials suited to Alberta's climate for over 40 years. Their sprawling grounds and expert staff make it a go-to for serious landscaping experts and casual gardeners alike. The retail yard is open to the public from May to October for you to browse their amazing selection or taste the fresh produce available from August to October. In the winter, check out their other location open from November to May to grab your houseplants and seeds.

If you're a coffee lover, you can grab a beverage at the Caffeinated Kiwi, a mobile cafe located in the parking lot!

Location:

31313 118 AVE NW, ACHESON, AB, T7X 6M6





ROSIE'S GREENHOUSE

Rosie's Greenhouse has built a reputation for its vibrant floral displays and down-to-earth service. This family-run greenhouse is full of personality and colour with an ever-changing selection of annuals, hanging baskets and garden décor. It is a cheerful stop that locals swear by for spring planting. If you're a fan of colourful hanging baskets and beautifully arranged planters, Rosie's will steal your heart. Don't forget to grab fertilizer or maybe even a gift or two!

Make a full day trip out of it and be sure to grab some lunch at The Yellow Submarine and take in the trails at Wabamun Lake Provincial Park.

Location:

5124 49 ST, WABAMUN, AB, T0E 2K0

BLOOM-IN CRAZY GARDEN CENTRE

Bloom-In Crazy is a fun, family-owned and operated full-service garden centre that has something for everyone. With a massive selection of bedding plants, shrubs, trees and garden décor, it's a one-stop shop for both the hobby and seasoned gardener. Whether you're filling a few pots or planning a full backyard makeover, their staff is passionate about helping you build the garden of your dreams. After you're done

browsing the greenhouse, explore the beautiful trails at Chickakoo Lake Recreation Area just down the street!

Looking to learn more? They also host workshops and seasonal events that bring the community together. Visit our Events page or bloomincrazygardencentre.ca to learn more!

Location:

1130 TOWNSHIP ROAD 535, PARKLAND COUNTY, AB, T7Y 0B3

LOCAL NURSERY LTD

Local Nursery & Garden Center is a go-to supplier for gardeners and landscapers. As commercial growers open to the public, they carry a huge selection available at great prices, perfect for the home gardener and large-scale commercial projects. Unsure of your options? Local Nursery is staffed with experts who will be able to help you with all of your gardening inquiries while sharing some tricks of the trade. And, if you're looking to learn more, keep an eye out for their upcoming classes.

Location:

26515 TOWNSHIP ROAD 514, PARKLAND COUNTY, AB, T7Y 1E9

GOLDEN GREENHOUSES

Family-owned and operated, Golden Greenhouses is a great stop if you're looking for locally grown flowers and plants. It's a bright and inviting destination that's perfect for discovering new favourites. Whether you're looking for vibrant blooms or veggies for your garden beds, Golden Greenhouses has a wide selection to excite your green thumb. Keep an eye out for seasonal specials and unique finds. This greenhouse is open from April 26 to June 30 so don't forget to mark it on your calendar.

Location:

23 FOREST HEIGHTS DR, SPRUCE GROVE, AB, T7Y 1E8

Each of these nurseries and greenhouses has their own charm, specialties and personality, making Parkland County a perfect area to explore for plant lovers. Whether you visit one or make a day of it and tour them all, you're guaranteed to leave inspired (and probably with a few new leafy and floral friends). Plan your next greenhouse day trip this summer and take in all the County has to offer. Happy planting!



Let's talk about your tax dollars

Survey closes July 4, 2025

Complete our 2025
BUDGET SURVEY
and you could **win a \$250** gas gift card

