

# What's changed with recycling at Parkland County Transfer Stations?

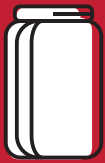
The following items are **no longer allowed** in blue bag recycling:



**Plastic bags, film and wrap**  
(e.g. grocery bags, food wrap, re-sealable bags)



**To-go cups**  
(e.g. drink cups, lids and straws – most paper coffee cups can go in the green organics cart)



**Glass, including jars**



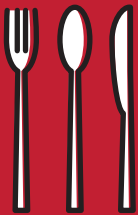
**Tetra Paks without deposit**  
(e.g. soups, broth, liquid egg)



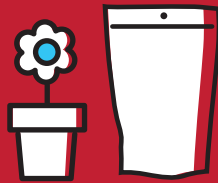
**Styrofoam**  
(e.g. packaging material, meat tray, take-out containers)



**Small metal items**  
(e.g. coat hangers, nails, broken household items)



**Single use plastic items**  
(e.g. cutlery, straws, coffee pods)



**Plastic packaging from toys, food and household items**  
(e.g. fruit and vegetable bags, cereal box liners, pet food bags, plant pots)



**Soft/flexible plastics**  
such as plastic clamshell containers (e.g. berries, salads, bakery items)



**Single use plastic cups**  
(e.g. pudding, applesauce, yogurt)

For a full list of changes – including what's acceptable in recycling and organics, please visit [www.parklandcounty.com/waste](http://www.parklandcounty.com/waste).

# What goes where?

## BLUE BAG RECYCLING

*All items must be clean and free of liquid, food, or dirt.*

- Hard/rigid plastic containers, tubs and bottles, but no lids or caps (e.g. detergent, condiment or shampoo bottles; margarine and yogurt containers)



- Tin food cans (clean and in original shape)



- Magazines, newspaper, flyers and catalogues



- Office paper, envelopes, craft paper



- Books with front and back covers removed



- Wrapping paper (no foil), greeting cards (decorations removed)

- Boxboard (e.g. cereal, cracker, cookies, tissue boxes)



- Cardboard, flattened

## ORGANICS

- Food waste



- Food soiled paper (including pizza boxes, coffee filters)



- Paper coffee cups



- Plant/grass clippings and leaves



- Shredded paper



## WASTE

- Styrofoam and rubber



- Single-use, film and clamshell plastics



- Non-refundable glass



- Single-use packaging



- Fabric



- Bagged pet waste



**Don't forget the other two R's of recycling!**

### Reduce

Use of single use items – such as cups, straws, containers

### Reuse

Lunch containers, coffee mugs, shopping bags

**When you're done with this handout, don't forget to blue bag recycle it too!**

**Questions?**

Contact Parkland County Solid Waste Services at 780-968-8448.