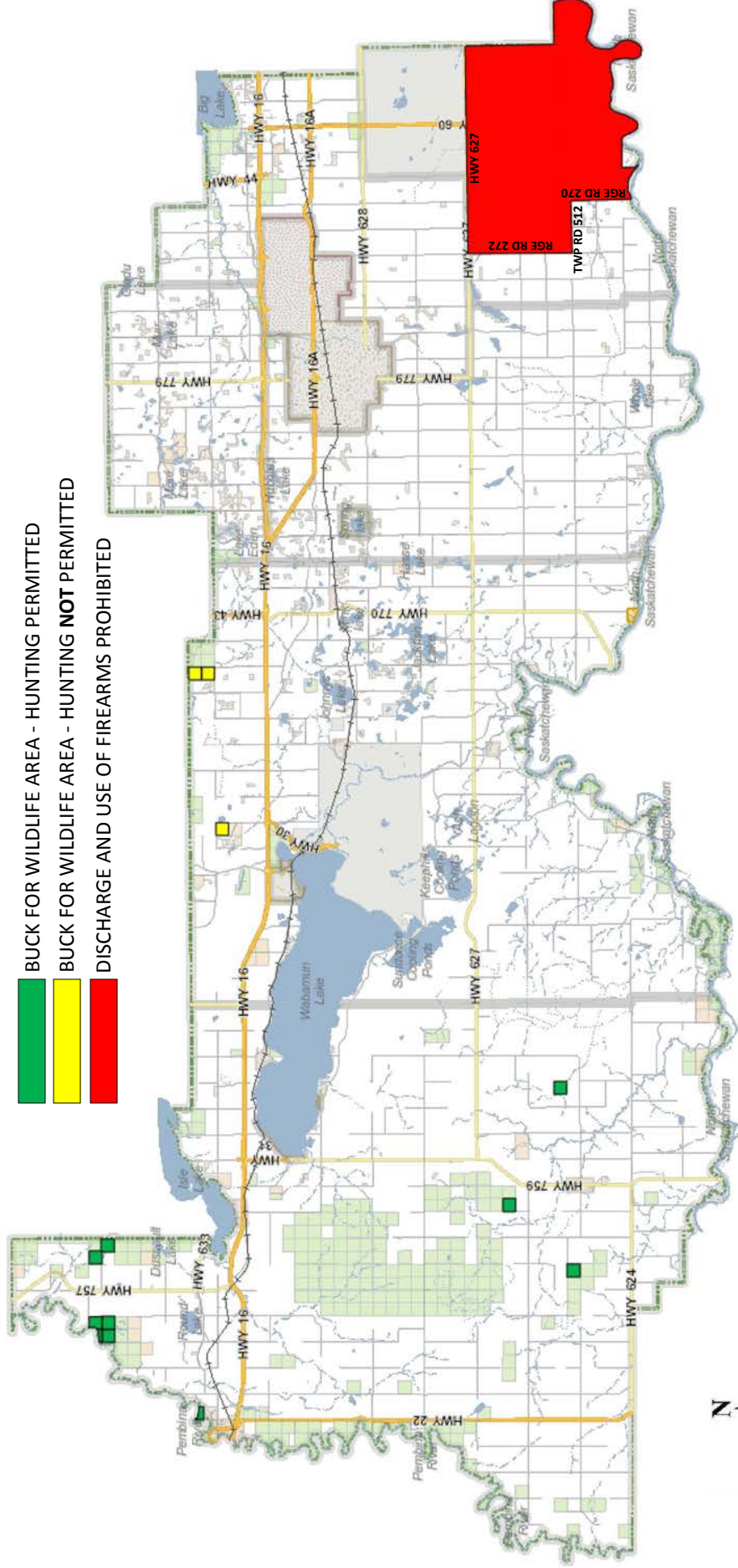


# PARKLAND COUNTY HUNTING AND DISCHARGE OF FIREARMS MAP



- BUCK FOR WILDLIFE AREA - HUNTING PERMITTED
- BUCK FOR WILDLIFE AREA - HUNTING NOT PERMITTED
- DISCHARGE AND USE OF FIREARMS PROHIBITED



**BFW—HUNTING NOT PERMITTED**

- NE 30-53-02-W5
- SE 30-53-02-W5
- NE 19-53-03-W5

**BFW—HUNTING PERMITTED**

- SE 17-51-06-W5
- NW 26-51-06-W5
- SE 16-54-06-W5
- NW 16-54-06-W5
- NW 28-53-07-W5
- SE 13-54-07-W5
- SW13-54-07-W5
- NE 13-54-07-W5
- NW 13-54-07-W5
- NE 16-51-04-W5

**DISCHARGE AND USE OF FIREARMS PROHIBITED**

All those portions of Townships 50 and 51, Ranges 25 and 26 west of the 4th Meridian, Sections 13,14,23,24,25,26, 35 and 36 in Township 51, Range 27 west of the 4th Meridian that lie within the boundaries of Parkland County excepting Section 31, Township 50, Range 26 west of the 4th Meridian

