

PROPANE CLEARANCES

A.

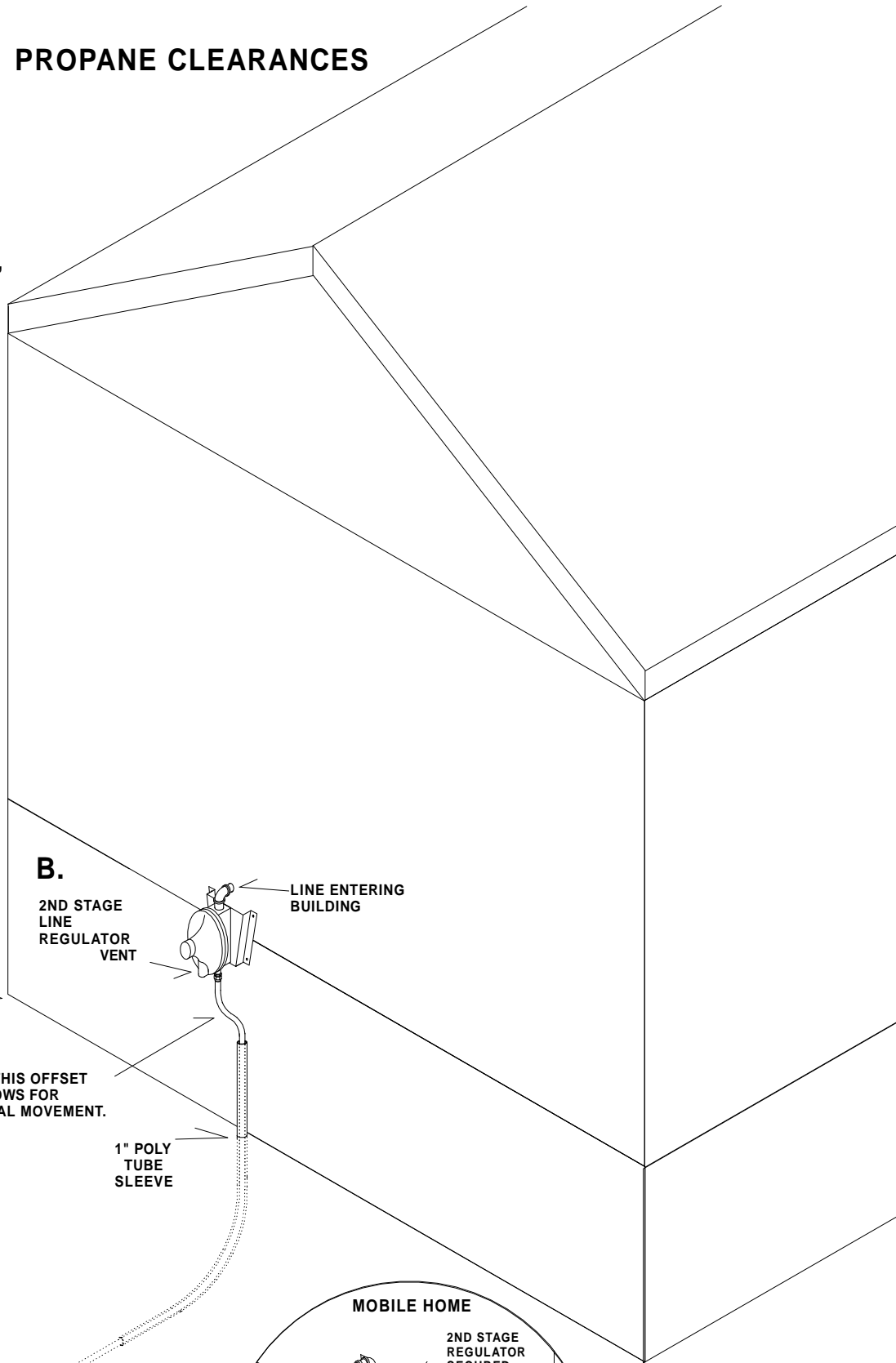
TANKSET CLEARANCES

1. 10 FT. TO ANY BUILDING,
2. 10 FT. TO ANY COMBUSTIBLES, (Any, wood/lumber piles, decks, shelters, driveway/parking areas, etc.)
3. 10 FT. TO ANY IGNITION SOURCE, (Any open flames, BBQ/patio heaters, electrical outlets or switches, vehicles, window a/c, unit or compressors, etc.),
4. 10 FT. TO ANY PROPERTY LINE,
5. 10 FT. TO ANY AIR INTAKE, (Intake to any direct vent appliances, or intake to any mechanical ventilation system).

B.

LINE REGULATOR CLEARANCES

1. 10 FT. TO ANY IGNITION SOURCE, (open flame, BBQs/patio heaters, electrical outlets or switches, vehicles, window a/c unit or compressors, etc.)
2. 10 FT. TO ANY AIR INTAKE (intake to direct vent appliances, or intake to any mechanical ventilation system).
3. 5 FT. TO ANY BUILDING OPENING (doors, windows, crawl space opening).
4. 1 FT. ABOVE NORMAL SNOW COVER.



B.

2ND STAGE LINE REGULATOR VENT

LINE ENTERING BUILDING

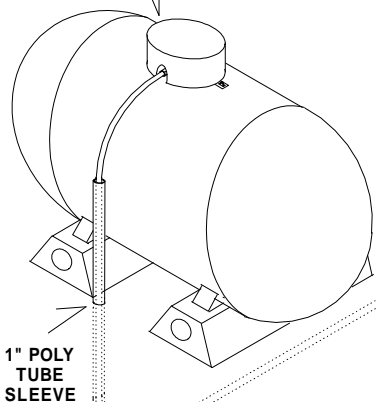
BUILDING FOUNDATION

NOTE: THIS OFFSET ALLOWS FOR VERTICAL MOVEMENT.

1" POLY TUBE SLEEVE

A.

SERVICE REGULATOR VENT, BELOW TANK HOOD.



MINIMUM SERVICE LINE BURIAL DEPTH IS 15", OR 24" UNDER DRIVEWAYS

RUN POLY SLEEVE FROM ABOUT CENTER LINE OF TANK'S SIDE TO AT LEAST 24" HORIZONTALLY ALONG TRENCH BOTTOM AT TANK END AND, AT LEAST 12" ABOVE GRADE AGAINST BUILDING WALL DOWN TO AT LEAST 24" HORIZONTALLY ALONG TRENCH BOTTOM. REMEMBER TO SEAL EXPOSED SLEEVE ENDS TO TUBING, TO PREVENT MOISTURE FROM ENTERING SLEEVE.

MOBILE HOME

2ND STAGE REGULATOR SECURED TO BUILDING

SKIRTING