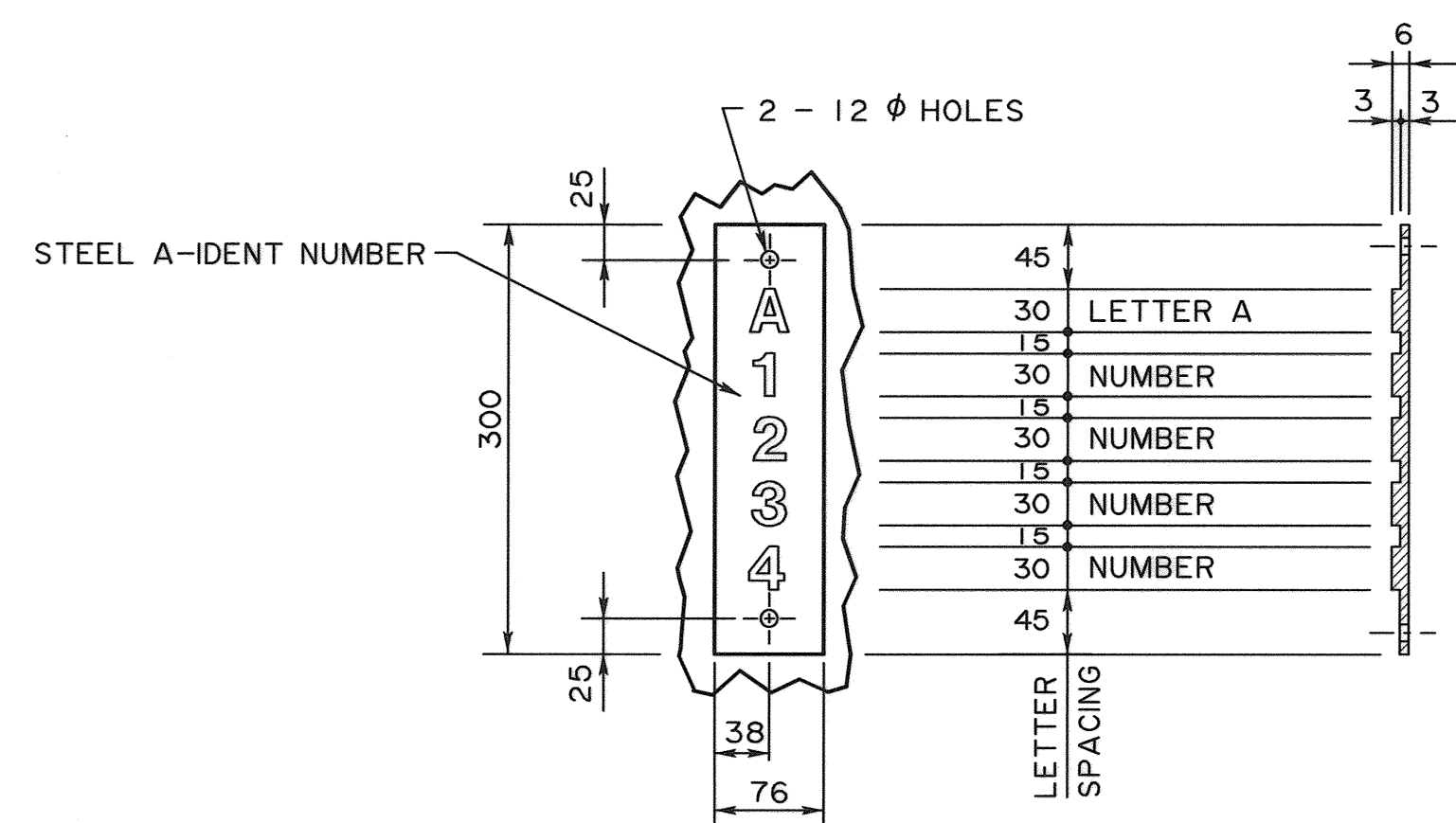
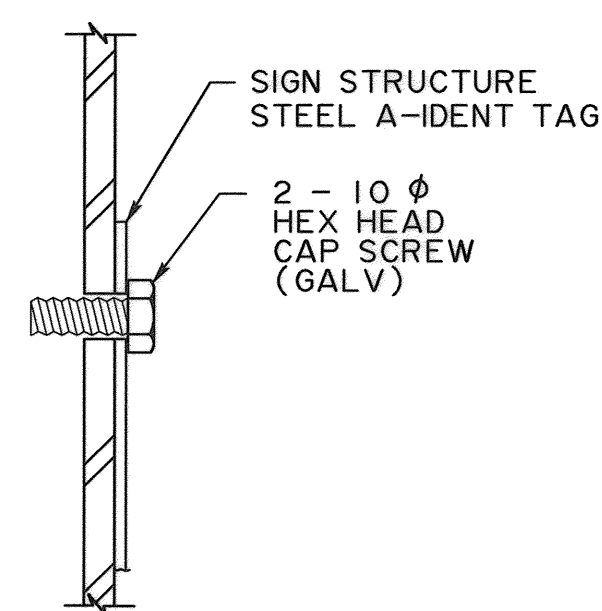


**IDENTIFICATION TAG LOCATION FOR OVERHEAD SIGN STRUCTURE**  
(BRIDGE SUPPORT SHOWN CANTILEVER SIMILAR) 1:50

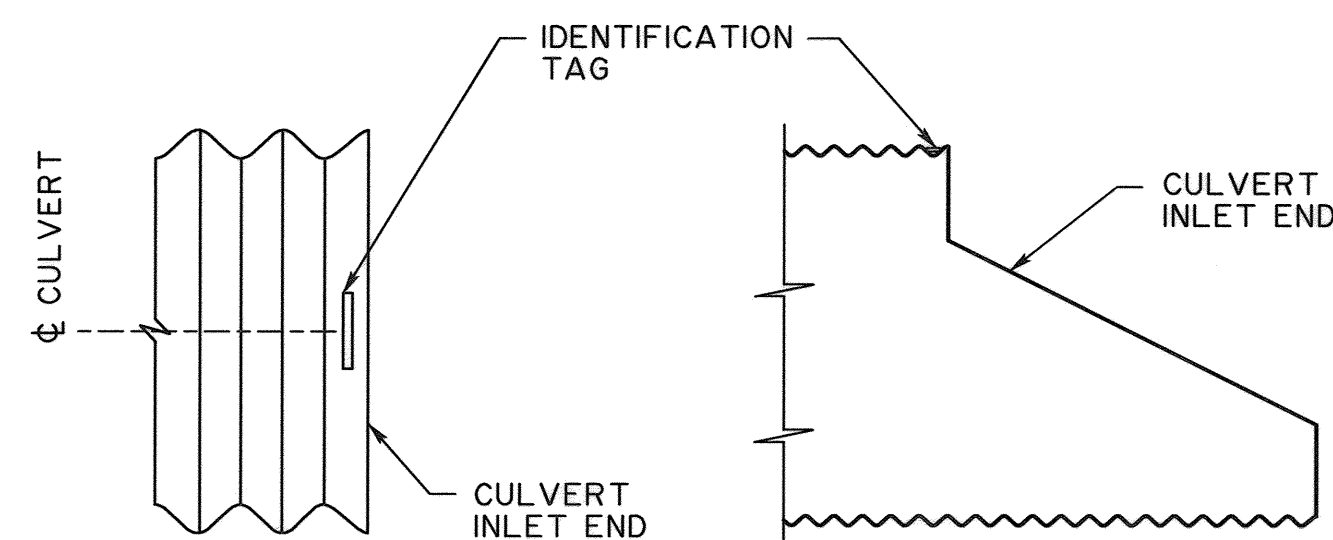


**CASTING DETAILS**  
1:5



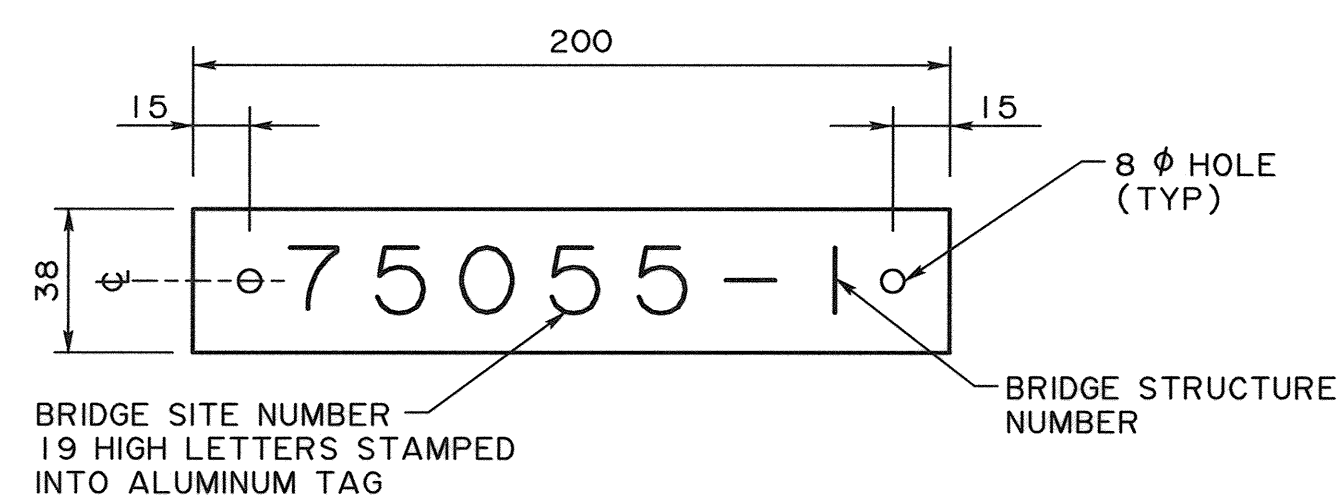
**INSTALLATION DETAILS**  
1:2

**OVERHEAD SIGN STRUCTURE IDENTIFICATION TAG**

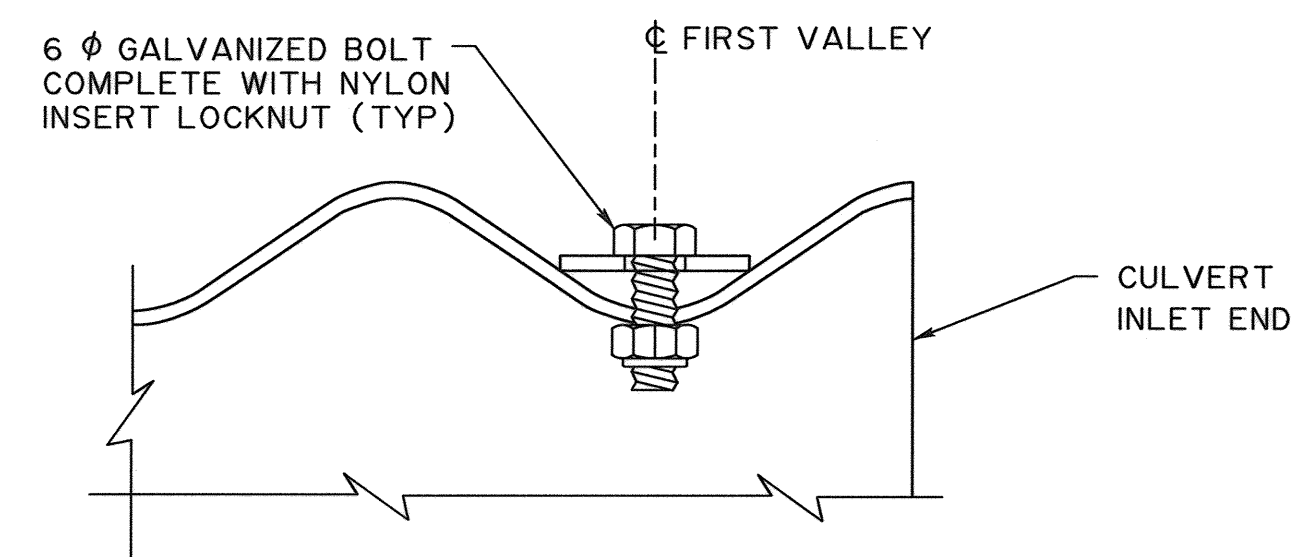


**CSP AND SPCSP CULVERT**

**IDENTIFICATION TAG LOCATION FOR CULVERTS**  
1:75



**ALUMINUM TAG DETAILS**  
1:2



**INSTALLATION DETAILS**  
(CSP AND SPCSP CULVERTS) 1:1

**CULVERT IDENTIFICATION TAG**

**GENERAL NOTES**

- ALL DIMENSIONS ARE IN MILLIMETRES UNLESS OTHERWISE NOTED
- FABRICATION AND INSTALLATION OF ALL TAGS SHALL BE IN ACCORDANCE WITH THE STANDARD SPECIFICATIONS FOR BRIDGE CONSTRUCTION SECTION 13
- ALL TAGS SHALL BE FABRICATED TO THE DIMENSIONS SHOWN, ANY PROPOSED CHANGES SHALL BE REVIEWED AND ACCEPTED THE DEPARTMENT

**SIGN STRUCTURE IDENTIFICATION TAGS**

- IDENTIFICATION TAGS FOR SIGN STRUCTURES SHALL BE LOCATED ON THE RIGHT HAND SIDE COLUMN IN THE DIRECTION OF TRAVEL. THE TAG SHALL BE INSTALLED FACING THE BACK SLOPE 2 400 ABOVE COLUMN BASE PLATE. THE COLUMN RECEIVING THE IDENTIFICATION TAG SHALL BE SHOP DRILLED AND TAPPED FOR 2 - 10  $\phi$  HEX HEAD CAP SCREWS
- MATERIALS FOR SIGN STRUCTURE IDENTIFICATION TAGS SHALL BE CAST ALUMINUM
- ALL LETTERS AND NUMBERS CAST ON THE TAG SHALL BE UPPERCASE UNIVERS 65
- THE STEEL A-IDENT NUMBER SHALL BE OBTAINED FROM THE BRIDGE ENGINEERING SECTION OF ALBERTA TRANSPORTATION
- ALL HEX HEAD CAP SCREWS SHALL CONFORM TO ASTM A307
- ALL HEX HEAD CAP SCREWS SHALL BE GALVANIZED IN ACCORDANCE WITH ASTM F2329
- OVERHEAD SIGN STRUCTURE IDENTIFICATION TAGS SHALL BE SUPPLIED WITH BLACK BAKED ENAMEL EVERYWHERE EXCEPT FOR AND ALL NUMBERS AND LETTERS WHICH SHALL BE EXPOSED ALUMINUM

**CULVERT IDENTIFICATION TAGS**

- IDENTIFICATION TAGS FOR CULVERTS SHALL BE INSTALLED AT THE INLET END ON THE CENTRELINE OF THE CULVERT. CULVERT TAG SHALL BE INSTALLED IN THE FIRST VALLEY OF THE CORRUGATION WITH THE TEXT FACING THE ROADWAY
- MATERIAL FOR CULVERT IDENTIFICATION TAGS SHALL BE 14 GAUGE ALUMINUM
- THE TAG SHALL BE STAMPED WITH THE BRIDGE SITE AND STRUCTURE NUMBER IN 19 HIGH LETTERING
- ALL LETTERS AND NUMBERS CAST ON THE TAG SHALL BE UPPERCASE UNIVERS 65
- BOLTS SHALL CONFORM TO ASTM A307. NUTS AND WASHERS SHALL CONFORM TO ASTM A563 AND F436 RESPECTIVELY

				RECOMMENDED DIRECTOR BRIDGE ENGINEERING <i>[Signature]</i> For			
REV    DATE    REVISION    BY				APPROVED EXECUTIVE DIRECTOR TECHNICAL STANDARDS BRANCH <i>[Signature]</i>		<b>STANDARD IDENTIFICATION TAGS</b>	
DESIGNER	CM CM	CHECKER	DB DB	DATE	2017-04-06	DATE	2017-03-09
				SHEET	1 OF 1	DRAWING	
				S-1848-17			