

APPENDIX B

Mapbook of Parkland County Drainage System



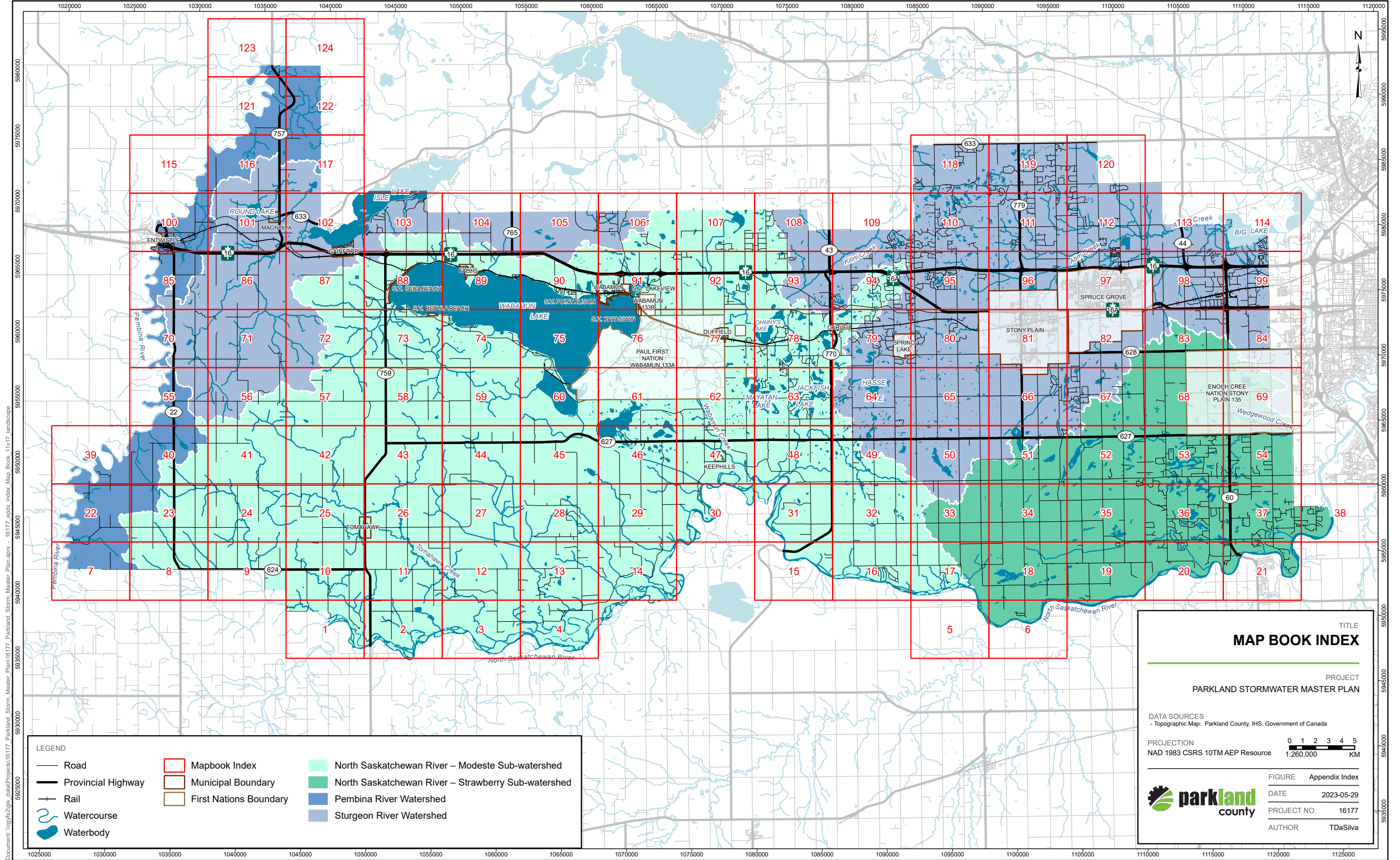
Parkland County's storm drainage system is shown in a series of 124 maps ("mapbook") at a 1:20,000 scale (when printed to 11x17). The detailed maps include the following information:

- Photobase
- Contour lines (5m)
- Rivers, lakes, creeks and other waterbodies – from the provincial GIS database
- Storm sewers / gravity mains and stormwater forcemains
- Stormwater lift stations
- Culverts
- Bridges / bridge sized culverts
- Stormwater management facilities
- Licensed drainage ditches
- Special structures (e.g., weirs)
- Modeled drainage path – anticipated flow direction based on LiDAR data

These mapbooks were developed by ISL Engineering and Land Services using Parkland County GIS data obtained in 2022 and 2023. The GIS is set up to allow Parkland County to update the mapbooks as new GIS data becomes available, and/or to show different GIS attributes.

This appendix includes a key plan followed by the full 124 page mapbook.

B



LEGEND

- Road
- Provincial Highway
- Rail
- Watercourse
- Waterbody
- Mapbook Index
- Municipal Boundary
- First Nations Boundary
- North Saskatchewan River – Modeste Sub-watershed
- North Saskatchewan River – Strawberry Sub-watershed
- Pembina River Watershed
- Sturgeon River Watershed

TITLE
MAP BOOK INDEX

PROJECT
PARKLAND STORMWATER MASTER PLAN

DATA SOURCES
- Topographic Map: Parkland County, IHS, Government of Canada

PROJECTION
NAD 1983 CSRS 10TM AEP Resource

0 1 2 3 4 5
1:260,000 KM

FIGURE Appendix Index

DATE 2023-05-29

PROJECT NO. 16177

AUTHOR TDaSilva

Document: \\gys2\gis_data\Projects\16177_Parkland_Storm_Master_Plan\16177_Parkland_Storm_Master_Plan.aprx - 16177.aprx_index_Map_Book_11x17_Landscape