

Municipal Lands and Reserves

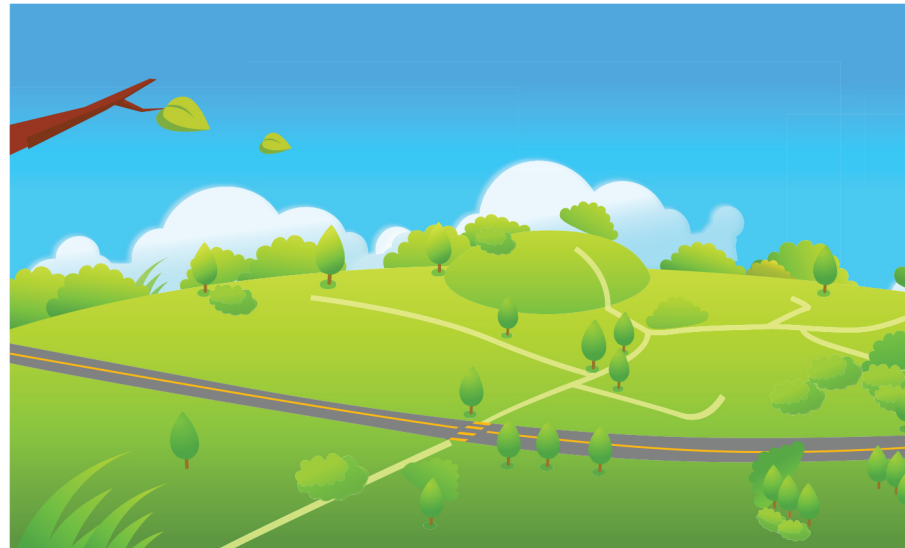
What is an ER?

Environmental Reserves (ER) are lands considered essential to the protection of the environment. ER lands are usually located next to bodies of water such as streams and lakes and provide access to water.



What is an MR?

Municipal Reserves (MR) are lands that are utilized for recreational purposes, including public parks, or for school access, as green space, or as a buffer to separate lands.



What is the purpose of Bylaw 2023-15?

The County is directed by policy to acquire, manage and dispose of lands in an efficient, transparent and responsible manner aligning with the Municipal Government Act. The purpose of the Municipal Lands and Reserves Bylaw 2023-15, as amended April 2024, regulates the conduct and activities of people on municipally-owned lands to ensure the safe, enjoyable and protection of lands as natural ecosystems for the benefit of all residents.